

April
2026

•

£1

where
sold

Bardfield Times

News and views from Great Bardfield and Little Bardfield



Ten editions of Bardfield Times are published each year by volunteers from Great Bardfield and Little Bardfield parishes. Articles, letters, etc. for inclusion need to be received by the editors by the **14th of the month prior to publication**. The management team reserve the right to refuse, postpone or edit any material received for publication. Views expressed in this magazine are not necessarily those of the management team.

Editor: Janet Dyson
drjanetdyson@gmail.com

Layout designer: Helen McGlynn
helenbtlayout@gmail.com

**Hand written letters
or articles for typing:** Alicia Holmes
Bunbury, Bridge Street, CM7 4SY

Advertising: Kate Fox 01371 810111
kateandianfox@btopenworld.com

Distribution: Ray Coles 07470 992224
Mike Brown 07977 929614
distribution@bardfieldtimes.com

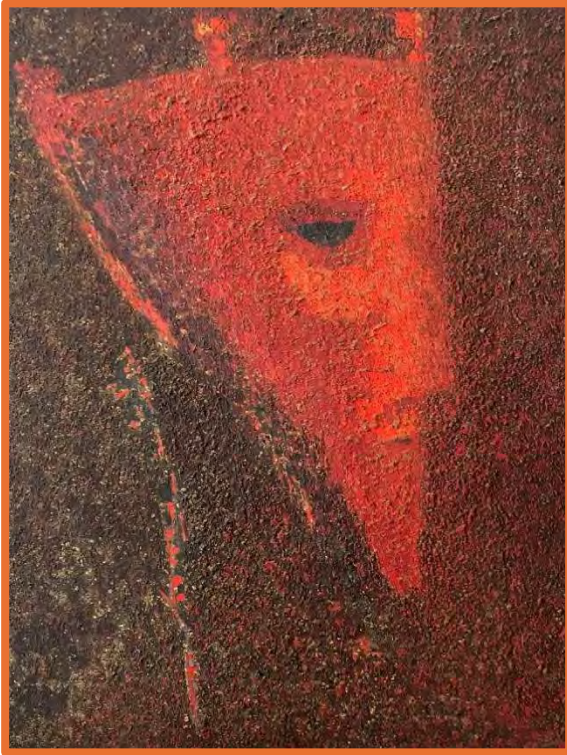
Treasurer: Jackie Newton 01371 810586
treasurer@bardfieldtimes.com



Front cover: Lucy Woodcock proudly holding her Horticultural Show award. Photo by Liz Crow

Above: Gorgeous display at the Horticultural Show. Photo by Doug Joyce

ARTISTS OF GREAT BARDFIELD Clifford-Smith and Joan Glass



Clifford-Smith and Joan Glass came to Great Bardfield with their sons Jonathan and Silas in 1952. At this time a number of artists were living in the village and the family quickly became involved with plans for an open house exhibition in 1954. They rented Buck's House where Joan exhibited paintings and colourful textile designs, and Clifford showed his paintings that summer. His work, which suggested

influences of Picasso and Rouault, was described in a Daily Mail review as 'modern expressionist treatment of the human figure that is vigorous, emotional and Mediterranean in feeling'. His paintings feature a rich use of paint often put on thickly with a palette knife. It is reported that 1,700 people visited the village in 10 days and the artists found their work selling well. Other exhibitions took place throughout the 1950s attracting increasing numbers of visitors. We have one of Clifford Smith's paintings which arrived unexpectedly having been discovered in a house clearance and was generously brought to Great Bardfield. Too large for the Bawden Room the dramatic *Red Knight* has found a place in the village bookshop where it inspires a range of responses. There is also a powerful painting by Clifford Smith in Thaxted Church. Silas Clifford Smith describes the lives of his family in Great Bardfield in his fascinating book *Under Moonlight*.

Bardfield Cinema Club



Great Bardfield Town Hall



Doors Open 7.30pm

Film Starts 8.00pm

Members free

Non-members £7

Friday 10th April



Editorial

We have a very full edition this month with so many exciting and varied events planned for the coming weeks. We've got off to a good start with the recent, highly enjoyable Quiz Night organised by the brilliant Pre-school team whose excellent catering will be hard to beat. The Horticultural Spring Show was a delight attracting record entries from people of all ages, The Town Hall was a riot of colourful spring flowers – another great team effort.

This month we look forward to an entertaining and informative evening with King Henry VIII organised by the Town Hall Committee. There's fundraising Bingo at Little Bardfield Cricket Club in memory of wonderful Charlie Hull. If you're feeling public spirited you could join the village Litter Pick on April 18th, or help with the Churchyard Tidy on May 2nd. And it's time to polish up your boules and start practising for the village Boules competition. Never a dull moment!

I'm taking this opportunity to flag up a special event planned for June when, as part of the 700th anniversary celebrations for the founding of Clare College Cambridge, the Historical Society will be celebrating the life of Elizabeth de Burgh, Lady of Clare who brought prosperity to Great Bardfield and in 1369 signed the statutes of the college in her home at the Hall, next to the church. The Choir of Clare College will be giving a concert in St Mary's Church on Saturday, June 27th at 7.30pm and a memorial plaque will be installed in the church. Further details will be available later and tickets for this very special event will be on sale in April so please save the date.

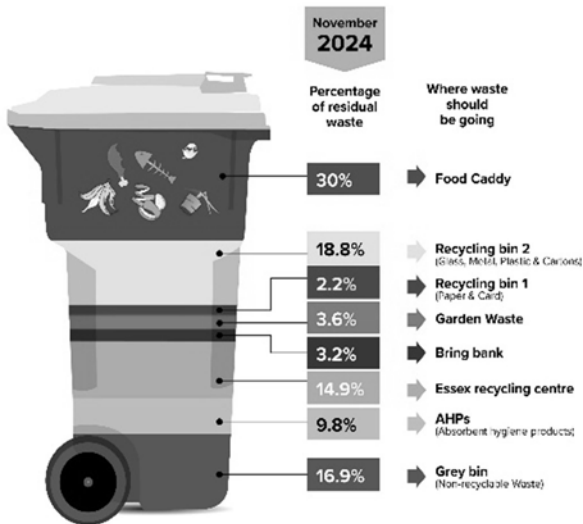
Finally, do read Mrs. Crow's school report on page 10 and see if you can supply any of the items needed for 'The Imagination Station'.

Janet Dyson
Editor

GREAT BARDFIELD ANNUAL PARISH MEETING

THURSDAY 14 MAY 2026

7.30 pm at Great Bardfield Town Hall



Representatives of Braintree District Council's Waste Minimisation & Sustainability Team will be in attendance to answer your questions

***Review of the year in Great Bardfield
Reports from Village Organisations
And District and County Members***

Join us for a glass of wine at 7.00pm.

Select Society Theatre Company Presents

Divorced, Beheaded, Died **An Audience with** **King Henry VIII**

The Year is 1544 and King Henry, the Eighth of that name, is engaged upon 'Royal Progress'; halting here to afford his Loyal Subjects the opportunity to have Audience with their Sovereign Lord and King.

Performed by:

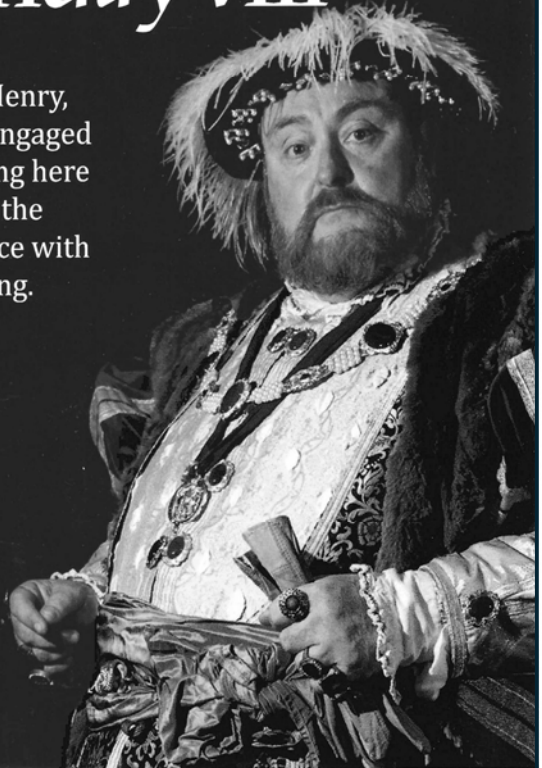
Jack Abbot

Written by:

John White

Audience Age Guidance: 12+

www.kinghenry8th.com



Saturday 25th April 2026 at 7.30pm

Town Hall, Dunmow Road, Great Bardfield, CM7 4SA

www.ticketsource.co.uk/greatbardfield-town-hall-management-committee

Great Bardfield Parish Council Report

Playground Maintenance

Following our recent safety inspection, we are in the process of having maintenance jobs done to some of the play equipment. We thank Mr & Mrs Skeet for their very generous help in laying new bark chippings and for ensuring the playground area is looking clean and tidy for the coming season. We hope you, your children and grandchildren enjoy some fun times at the children's playground in the Spring and Summer.

Planning Applications

Great Pitley Farm: Six bay cart lodge (garaging and storage). No objections provided the conditions regarding materials and finishes are met, as this is adjacent to the Grade 2 listed farmhouse.

Holly House, Dunmow Road: various internal works and replacement windows to the rear of the property. No objections subject to any conditions which may be required by the Historic Buildings Officer.

The Parish Council have submitted a response to the Draft National Planning Policy Consultation and will also respond to Braintree District Council's Draft Local Plan Regulation 18 Consultation before the deadline of 17 April. Any residents who are interested in reviewing BDC's latest plans for development within this District can view these online via the Braintree District Council website.

Tree Work

A reminder that no tree works should take place during the nesting season. Also, any works planned within the Conservation Area of the village require permission from Braintree District Council.

Bin Collections

A reminder that the new red & blue bins will not come into operation until June when I hope we can all keep up with the arrangements. In the meantime here are the dates for bin collections in April.

Wednesday April 8th	Clear Recycling Sacks & Food Bin Green Bin (for subscribers only)
Tuesday April 14 th	Grey Bin & Food Bin
Tuesday April 21 st	Clear Recycling Sacks & Food Bin Green Bin (for subscribers only)
Tuesday April 28 th	Grey Bin & Food Bin

Next Parish Council Meetings

The next Parish Council meeting will be held at 7.00pm on Wednesday 8th April 2026, in the Committee Room at the Town Hall. Our meetings are open to the public. If you plan to attend, please contact Kate Fox, Parish Clerk on 810111 or by email at clerk@greatbardfield-pc.gov.uk.

Annual Parish Meeting – Thursday 14th May, 7.30pm

All residents are invited to the Parish Council's annual presentation to the community, where we will provide copies of our annual report. We will also receive annual reports and updates from many village societies and organisations. Representatives from BDC Waste Management will be attending to answer any questions about the new arrangements for our waste and recycling.

Carolynne Ruffle, Chairperson

BARDFIELD BOULES 2026

Please join us for this year's Bardfield Boules Competition. The competition starts in early May so make sure that you enter your team by the end of April (see poster in this edition of the Bardfield Times for how to sign up – page 15).

Teams of two play 4-5 games each in the first round (arrange your own games during May & June). The top 2 teams in each group go through to the next rounds which take place in July & August with the quarter finals to be played by early September. The Semis and the Final will take place on Saturday 26th September (put the date in your diaries, even if you are just there to watch).

Practice Sessions for those who would like an intro or need to brush off the winter cobwebs will be held at the Town Hall on Monday evenings, 7-8pm, starting 20th April and every following Monday until you are all experts.

The current champions, Ian & Alex Ruffle, are determined to hold onto the crown for another year but they have plenty of good competition and the winners could be you.

Here's looking forward to Boules fun at the Town Hall this summer, All proceeds to Town Hall funds.

Madame Boules

GREAT BARDFIELD HISTORICAL SOCIETY

Saturday, April 18th at 7.30pm
Great Bardfield Town Hall

AGM followed by

The Mystery of Gestingthorpe
Roman Villa

and Roman East Anglia



A talk by Ashley Cooper

Wine and nibbles and the opportunity to begin/renew membership of the Historical Society @ £6 per person.

Entry: £4 members, £6 non-members

Everyone welcome



LITTLE BARDFIELD CRICKET CLUB

Fundraising Event

In loving memory of Charlie Holl



Saturday 11th April 7.00pm

Great Bardfield Town Hall

Licensed Bar - Cash Prizes!

Tickets £3 in advance / £5 on the night

To book tickets visit www.lbvcc.co.uk

or contact Mo Graham 07775515000 / Sandra Hitchcock 07974682309

For more info: www.lbvcc.co.uk / contact@lbvcc.co.uk

Proudly sponsored by



Great Bardfield Primary School

With the Easter break just around the corner, it feels remarkable that we are heading into our final term of the academic year. The children have shown real focus and determination in their learning this term, and we were thrilled to share their achievements during our spring learning consultations and in our written mid-year reports this half term. We are hopeful that the coming weeks will bring brighter skies and a welcome shift away from the coughs and colds that have lingered through the winter months. The return of milder weather will also mean reopening our school field, giving our children the additional space they so enjoy for play, sport and outdoor learning.

At Great Bardfield Primary School, we are guided by three simple values: Courage, Compassion and Community. These ideas shape everyday life in school and influence the way we learn, behave and look after one another.

We inspire **courage** by helping pupils have a go, even when something feels tricky. That might be tackling a challenging maths problem, reading their work aloud in class, performing in assembly, or simply putting their hand up to share an idea. Children are regularly reminded that mistakes are part of learning, and we celebrate effort, curiosity and perseverance just as much as the final result.

The value of **compassion** is just as important. We work hard to make sure everyone in school feels welcome, listened to and valued. Small acts of kindness happen every day – holding the door open, helping someone find their classroom, or checking in on a friend who looks a little unsure. Our buddy system, where older pupils support children in Reception, is a lovely example of this in action, whether they are reading together, organising games at lunchtime or offering a reassuring hand in the dining hall.

Finally, **community** is what brings everything together. Our school is strengthened by the close relationships between families, staff, governors and the wider village. Events, trips and shared projects give pupils a sense of belonging and show them that they are part of something bigger. By working together, we create a warm and supportive environment where every child has the chance to flourish.

One of our aims is to give our pupils memorable experiences that bring learning to life beyond the classroom. There have certainly been plenty

of these this term. We welcomed first-year degree students from the ROM Theatre, who delivered an engaging drama workshop to Aldridge Class. We also welcomed Palisander, a lively recorder quartet known for



their imaginative and entertaining performances using instruments of all sizes – including some over six feet tall! Performing mostly from memory and bringing music from across the centuries to life, they showed us just how versatile and exciting the recorder can be. Our children were enthralled!

Aldridge Class trying to solve the case of the (almost) stolen plants

This month, our Key Stage 2 children visited the Royal

Botanic Gardens at Kew. Pupils took part in an exciting investigation inside the famous Temperate House. Working as plant detectives, they followed clues to uncover who had attempted to break into the Victorian glasshouse and why rare plants can be targeted by illegal wildlife trade. Along the way, they learned about temperate biomes, the importance of plants to our lives, and the challenges many species face in a changing environment.



Riley, Zola and Sam being detectives at Kew

Last month, we celebrated World Book Day with a strong focus on reading for pleasure. Pupils visited Between the Lines Bookshop to choose a book using their voucher and we are, once again, extremely grateful to Janet Dyson and her team for helping to make the occasion so special. We also came to school dressed ready for bedtime and shared our favourite bedtime stories – because what could be better than

snuggling up with a good book at the end of the day? Our younger children have also kept up the tradition of entering the Spring Horticultural Show – special congratulations to Lucy Woodcock who won the Irene M.Horsnell Shield.

Looking ahead to next term, we are excited to introduce our Imagination Station – a creative play area filled with a range of salvaged small and large items to inspire imaginative play during break and lunchtime. We'll be building this together as a school community, collecting items across the term. If you have anything from our suggested list that you no longer need, we would love for you to send it in to school. Your contributions will help us create a rich, engaging space for all children to enjoy.

**Liz Crow,
Headteacher**

‘The Imagination Station’

Great Bardfield Primary School are collecting...

- Pots, pans, baking trays, cake tins, kettles, jugs, kitchen utensils, bowls, funnels, colanders
- Wooden planks, pallets, disks, blocks, logs, plastic crates, boxes, bottles
- Old phones, keyboards, toy cars, trucks, trains, buggies, prams, wheels (all sizes), wheel barrows (child sized)
- Pipes, tubes, drainpipes, guttering, cable reels, hoops
- Paintbrushes, plant pots
- Dressing up clothes, bags, suitcases
- Large fabric, tarpaulins (for den building)
- Buckets and spades, cones, clipboards, chalk
- Wicker or plastic baskets (all sizes), laundry baskets

...and any other unwanted items you have which might be useful.

Thank you from all of the children at Great Bardfield 😊

Food and Drink
Hog Roast, BBQ
Hot and Cold drinks
Ice Creams

£10
a pitch



SATURDAY 16TH MAY
11AM - 3PM

In the grounds of
Great Bardfield Pre school
Braintree Road
CM7 4RN

To book a pitch please contact:
EMAIL: Bardfieldgaragesale@outlook.com
TEXT ONLY: 07936538897
(please note no phone calls will be answered)

Follow us on Facebook for updates
Bardfield Garage Sale

Great Bardfield Pre School Charity number : 1000159

Horticultural Society

Our February meeting was well attended as usual, around 55 keen gardeners listened to our speaker Dr Ward from Norwell Nurseries, Newark, present his sixty recommended superior plant varieties, e.g. the catmint *Nepeta*, choose variety 'Chettle Blue'.

His garden and nursery are on heavy clay so in wet winters it is sodden, in dry summers it is parched, as seems to be our weather pattern. Interestingly to overcome this he has raised some beds with sharp sand so roots grow down into the soil but vulnerable necks are in moist free draining sand and survival rates have been remarkable.

With him came a collection of fabulous pots of colour, tempting us all to buy these spring gems. Refreshments were served, along with the usual selection of delicious homemade cakes. There was a "Lucky Ticket" draw, the winner going home with a small tree! We also held one of our ever-popular raffles.

Our next event will be a garden visit to The Gardens of Easton Lodge on Thursday 28th May, 2.00-4.00pm. Members £10, non-members £12, which includes a tour and refreshments. For tickets, please contact Sue Dennison 07702 238987 or suedennison50@gmail.com

Our Spring Show was held on Saturday March 14th in the Town Hall.



A big thank you to everyone who came to support us: exhibitors, judges, stewards, helpers and the visitors. We had 46 adult exhibitors, 8 of whom were new! Welcome - we hope to see you again.

There was a wonderful display of spring flowers (the scent and colour of the daffodils filled the hall) together with some lovely flower arrangements, cakes and jams etc. and a good range of different handicrafts and photographs.



Judges scrutinising the entries

In the children's section we had 12 exhibitors, 5 of our competitors returning for another go plus 7 newcomers. We hope to see you all again at the Summer Show. A huge "Thank You" to Great Bardfield Primary School for entering about 50 coloured pictures entitled "Get Growing".

We had a lot of visitors in the afternoon who enjoyed seeing all the exhibits. There was a very popular tombola, a raffle and a plant stall. Tea and home-made cakes made by our members were served at The Bell Inn. Thank you, Zoey and Scott, this was very much appreciated by everyone. A particular thank you to Adrian and Helena for serving the teas and cake. Donations were gratefully received by the Horticultural Society.

Trophy Winners - Spring Show

Arthur Willis Cup

Highest points in the Flower Section

Peter Morris

Floral Art Cup

Highest points in the Floral Art Section

Mandy Boon

Ann Hayward Cup

Highest points in the Domestic Section

Janet Morris

Men's Domestic Cup

Best exhibit in class 36

Mick Gell

George Hervey - Murray Shield

Highest points in the Handicraft Section

Wendy Meldrum

Gill Hervey - Murray Shield

Highest points – Children aged 9 and over

Maddie Woodcock

Irene Horsnell Shield

Highest points – Children aged 5 to 8

Lucy Woodcock

Winner – Children's Section – under 5

Mabel Dobson

Congratulations to you all – well done. We hope to see you all again at the Summer Show on **Saturday, August 1st**.

If you would like to enter, schedules are available from various shops in the village and the Blue Egg or call 810524.

Additional BHS Membership benefit

As Bardfield Horticultural Society is affiliated to the Royal Horticultural Society we are now able to offer members of the Bardfield Horticultural Society an additional benefit - an RHS Garden Entry Discount card to share with members - this offers two adults a 50% discount off entry to any RHS Garden: Bridgewater, Harlow Carr, Hyde Hall, Rosemoor and Wisley (but not for Flower Shows or Glow Illumination events). Please contact Lynne Joyce 01371 810524 if interested (I hold the card!!)

Are you new to Great Bardfield or an established villager? You will find a warm welcome at the Horticultural Society. Why not become a member and enjoy events, talks and visits arranged throughout the year. Amazing Spring and Summer shows are held where you can demonstrate your gardening and baking skills.

A BIT OF SUNSHINE AFTER A GREY, WET WINTER
NOW THOUGHTS TURN TO ENTERING

THE BARDFIELD BOULES COMPETITION 2026

Enter your team by April 30



Come and join the annual boules competition
A fun way to meet new people. No experience necessary.
Two players per team – any age, gender, ability, etc.
Competition runs May to September
Finals Day – Saturday 26th September
(keep this date free if you intend to be in the last 4)
£10 per team – Proceeds to Town Hall Funds

ENTRIES & FEES TO:

Madame Boules (or Carolynne Ruffle)
caruffle@gmail.com or drop off at
Between The Lines Bookshop, High Street
(in an envelope with your name and phone number please)

Greenfingers

Clocks put forward, it's time to garden but also time to satisfy an urge to buy plants. Days are longer, hopefully sunnier and the plants that love the light are the numerous plants with daisy style flowers 'Day's eye' is a corrupted name for daisy, or so I read. This common name one uses to describe the flowers on many plants, a list would cover the space allotted for garden chat in the BT but three come to mind: First, Felicia, a sweet, little blue daisy ideal for the edge of borders or joining summer bedding in pots and baskets.

Second, *osteospermum*, low growing with big daisy flowers in a range of pinks and magenta, and even yellow. And, number three, echinaceas. The plant breeders have gone overboard on these so every colour is available, even one with green daisy flowers. This is a tall perennial but how it struggles in winter, not particularly with cold but wet. Perhaps a heap of sand and gravel around it to assist survival? Echinaceas are popular to produce the modern look, 'Prairie Style', where tall late flowers like



Osteospermum

itself, think of purple flowered verbena Bonariensis, mingle with grasses and all are left in desiccated, brown splendour for structure over winter. All the above demand sun so for those needing a shade lover and something statuesque, not a daisy, welcome to *Patrinia scabiosifolia*. A tip for those with small gardens, a few taller plants make for more interest and don't necessarily take up a lot of ground space, *Patrinia* for the shady part and verbena Bonariensis in the sun.



Echinacea

April Action

- ✿ Cut to the base asters. They have new but long botanical names now, daisy flowers in late summer usually blues and purples.
- ✿ Penstemon, say 'Bye-bye' to that exuberant green growth as they flower on the new growth, so ruthlessly shear to the ground.
- ✿ Rose black spot comes from the marked leaves, even those lying on the soil, so rake them off and heap some mulch, compost or bark to stop the fungus splashing up from these old leaves when it rains.
- ✿ Time to cut down those coloured winter stems on Salix and Cornus. Hard to say goodbye to them? Then leave one third.
- ✿ Seed trays at the ready, in warmth to germinate. Go cosmos and an early start needed for zinnias.
- ✿ Hint: add 1/3rd vermiculite to the compost for better results. Seed sowing is not just summer bedding, it can be perennials too, for example, aquilegia.

Great Bardfield Litter Pick and Spring Clean



Community Event on Saturday, 18th April

Join us in making Great Bardfield a cleaner and greener place! We are organising a litter pick and spring clean event on Saturday, 18th April. The event will start at 10am, and we will be meeting at The Fountain.

Event Details:

- Date: Saturday, 18th April
- Time: 10am
- Meeting Point: The Fountain

What to Expect:

- You will be supplied with hi-vis jackets, litter pickers, and rubbish bags.
- Join fellow community members to help keep our village clean and tidy.
- Dress comfortably and appropriately for the weather.
- Children welcome but please bring an adult.

Happy 90th Birthday!

Many congratulations to Adrienne Poulson, who has just celebrated her 90th birthday. Adrienne has been an active and valued member of our community for many years. We wish her many happy returns!



The Great Bardfield Charities

Can we help you?

If you live in Great Bardfield, are a group or organisation benefiting Great Bardfield residents then you are eligible to apply for financial assistance.

For more information contact one of the trustees
or

email GreatBardfieldCharities@gmail.com

Nature Notes: Not Everyone Loves Deer!

We are all aware that there is a big push to plant large numbers of trees and hedges to try and reduce our carbon footprint. To achieve the targets tree nurseries are working flat out growing trees for planting. We are importing ship loads of plastic tree guards and bamboo from China, which to me seems counterproductive, but the biggest problem in this part of our country is that a very large percentage of what is planted is destroyed by deer. Deer just love eating all the new shoots and they are experts at dismantling plastic tree guards to get at them. Deer are nice to look at and I as much as the next person love to catch the occasional glance of a deer but not herds of 90 or more rampaging through a farmer's crops, and as some of you know they are a hazard on the roads. They seem to delight in playing chicken dashing across the road in front of fast-moving traffic. Not only is it very distressing to the occupants of the cars but it leads to dead or injured deer and very expensive car repairs. The law tells us if we hit a deer and it is dead or injured on the road it is our responsibility to report it to the Police, but if it is dead or injured on roadside land we should report it to the landowner.

It is not many years ago if we went a decent journey by road, we could guarantee seeing dead foxes and rabbits as road kill. Last week I drove in to Chelmsford and the total road kill was two badgers, one muntjac and the indistinguishable remains of a larger deer, this gives us a good idea of what wild life is about.



Muntjac

We have six different Deer in the UK Red Deer, Roe Deer, Fallow Deer, Muntjac, Sika, and Chinese Water Deer. Only two of these are native and belong here: the Red Deer, and the Roe Deer; although

Fallow Deer have been here a long time, the Normans brought them to breed for food, The Duke of Bedford imported Muntjac for his wildlife park at Woburn and I was always led to believe that they spread all over after escaping but apparently that is not strictly true, security at Woburn is pretty tight. They have lots of exotic and dangerous animals and know how to look after them and keep them secure.

The Duke was very proud of his Muntjac and whenever he was invited to the grand estates of his friends for lavish parties, he didn't take a boring bunch of flowers from Tesco and a bottle of Prosecco as a gift he took a pair of Muntjac which were allowed to run free on their estates. The Duke's next addition to his collection was his Chinese Water Deer and much the same thing happened to them; he was not the first to have them in fact London Zoo had some before the Duke. Fortunately, we don't appear to have any of them in Essex as far as I know but I may be wrong, they are found mainly in Bedfordshire, Cambridgeshire, Norfolk and Suffolk. We don't want them! Sika Deer were introduced into some deer parks from Japan in the 19th century and some of them escaped, they are found mostly in Scotland and the New Forest. Our biggest pest is the Fallow Deer; we have large herds of them in all parts of the district some of the herds number 90 plus and they do have small numbers of Roe Deer running with them. We have far too many, they have no predators apart from humans and we don't eat enough venison; we do have fully trained experts who will shoot them and are only too pleased to do it. They will only shoot them in the season when they are allowed to shoot them if there is the demand for the venison, they don't shoot them purely for sport. Most local butchers sell venison and there are game dealers at our local markets. It is extremely healthy meat, the lowest in fat, and is considered a good aid to managing cholesterol. Unfortunately, its big problem is what we call the 'Bamby Effect', some people and children visualise deer as pretty dainty cartoon creatures rather than the biggest wildlife threat to farming and forestry.

Putting these notes together has made me realise there are some big gaps in my knowledge of the subject, researching deer is much more interesting than some of the rubbish on TV and keeps me out of mischief, I am hoping to do future notes on the different breeds of deer.

Mac Beanland

The Tuesday Club

In March we welcomed back a popular speaker, Sharon Gould, whose talk was titled “Who is H?” She explained that H was her second child, a daughter named Heather. Heather was born in hospital in 1976 and when it was discovered that she had Downs Syndrome, Sharon at first found this difficult to accept and wanted nothing to do with the baby, insisting that she would never take her home, until a visit by her local GP, Dr Stiff (known to everyone as Stiffy) changed her mind. The doctor told her to treat Heather as a “normal child”. This wasn’t without its challenges, as she could be stubborn and would rather be looked after than make the effort to do something for herself. However, Sharon found ways to make her independent, putting something she liked just out of reach until she learned to crawl towards it, leaving her alone with a bowl of favourite food and a spoon. Tough love worked.

At the age of 16 Heather joined the local Tesco store on a work experience scheme, and stayed on the scheme for six years (unpaid) before becoming a paid member of staff. This helped her communication skills immensely, and the only time she had a ‘bad day’ was when she had spent a long time putting all the bananas into straight rows and came back later to find them in disarray thanks to the customers! Despite this, she still works at Tesco 26 years later.

She went on to live independently in her own accommodation, where in her late thirties she met a male neighbour who had autism. They became a couple and with the support of both families they married and have been living happily together for eight years.

In April we welcome a new speaker, Joanne Larnar, who will be talking to us about “The Wonders of Norway”, her love of the country, the people, the landscape, the customs and the idiosyncrasies of The Land of the Fjords. This promises to be an informative and entertaining talk, and if you would like to join us on this occasion you would be very welcome. Visitors pay £5 for the talk and refreshments and if you should choose to become a member the price is just £30 for the year.

There will be posters around the village each month, so feel free to just turn up for any which sound interesting, Doors open at 2.00 and the meetings start at 2.30.

Cherry Whitby

GREAT BARDFIELD TUESDAY CLUB

THE WONDERS OF NORWAY



A talk by Joanne Larner

Joanne will talk about the people, landscape and idiosyncrasies of the land of the fjords with funny stories and stunning photographs

TUESDAY, APRIL 14, 2026 at 2.30

GREAT BARDFIELD TOWN HALL

Non-members of the Tuesday Club are very welcome
Visitors: £5 per talk

**For more details, please contact the Club Secretary
Marilyn Edwards on 01371 810555**

Garage and Shed Security

Whilst most houses have adequate security what is often neglected is the shed or garage, “nothing much in there” I hear you say, “Just a garden spade and fork”, but these are perfect tools for a burglar to use to get into your house. Adds insult to injury when the tool used to break into your house is your own, so give it some attention.

Garages and sheds by the nature of their construction and position especially when away from the house are always going to be vulnerable. Quite often the supplied locks provide just the barest minimum security and are easily overcome so always consider supplementing the existing locks with further locking systems both for the doors and items within. On garage doors this could be by adding locking bolts to both sides of the “up and over door” or a garage door defender in the ground in front of the door, if you have a side door don’t forget the security on this too. With sheds coach-bolt and plate the padlock hasp sections to the frame and door, use a good quality “Close Shackle” padlock or a key operated mortice lock; don’t forget the hinges ensure they cannot be unscrewed. Consider using “Ground Anchors” or “Shed Shackles” to chain larger items such as ladders, mowers and pedal cycles to (again good quality padlock and chain); keep chains tight so that it is not in contact with a surface it can be struck against. Protect windows with a wire mesh and fit a curtain or white wash the windows to prevent prying eyes. Visibly security mark your property with your post code and house number as this reduces the value to the thief; you can register serial numbers free of charge at www.immobilise.com. There are also a number of commercially available security marking systems available that are suitable for a wide range of products and others for specific products. It is also worth adding security lighting and a shed alarm to the shed or garage, there are even alarms available that when activated call your mobile phone, these are relatively inexpensive and available from most DIY/hardware stores. If siting a new shed where possible position it within sight of rooms in the house routinely occupied. Products that are fit for purpose can found by looking for the "Secured by Design" or "Sold Secure" logos.

PC James Draper

Braintree Community Safety & Engagement Officer

Town Hall Happenings

By the time you read this our annual Quiz night will have been completed and one team will have been crowned 2026 Champions!

On 25th April we have “An Audience with Henry VIII”, a light-hearted review of his life and wives. Tickets

are available via our website www.greatbardfieldtownhall.com. There will be a licensed bar. At the end of the performance the King will hold a question-and-answer session. This is a new venture for our committee, and I would hope that many people will support the evening. Into May we have our annual Art Show on 24th and 25th May.

John Maidman

Chair Great Bardfield Town Hall



Town Hall Yard: Edward Bawden

🌿 Churchyard Tidy 🌿

Saturday 2 May, 10am–1pm

Can you spare an hour or two to help care for our lovely churchyard?

This peaceful green space in the centre of the village holds special meaning for many local families, and is a much-loved spot for walkers (and their dogs!).

- We will be:
- ✂️ Cutting hedges
 - 🧹 Sweeping paths
 - 🔥 Having a bonfire (if the weather allows!)

☕ **Refreshments will be provided** – just bring along your tools if you can.

Let's come together to keep this space tidy and welcoming for all.

Everyone welcome – we'd love to see you there!

Memories of Great Bardfield in WWII

I spoke previously about Mr Goldstone repairing harness etc for the horses and most farms having horses to do work, but what I did not realise until later that the horses were vegetarians and how powerful they were. I also forgot to mention that Mr Goldstone employed two 'Saggers', both brothers who were deaf and non-verbal, Mr Goldstone wrote their instructions on a piece of slate, with chalk. There was a third son, who lived in Bendlowes Road, who was the same as his brothers, which at that time was unusual.

I also remember soldiers camping up The Walk starting at the Church End and continuing the full length of The Walk up to Bluegate Hall. In 1944, my friends and I (Lewis Hitchin, Gordon Andrews, Roy Creswell and Don Finlayson) often sat on the grass by the Windmill. The Windmill at that time was not a dwelling and it was brick not plastered, we sat and watched the aircraft towing gliders towards Wethersfield Airfield, getting ready for D Day, then in 1945, thank goodness the war came to an end. Huge parties were held in every village & town, also bunting was displayed and a message saying "Welcome Home Boys".

P G Morris

Bardfield ART SHOW 2026

The show will be held over the Late May Bank Holiday weekend on **Sunday 24th and Monday 25th May 2026.**

If you are interested in showing any of your work, please contact us for details and an entry form or collect a paper copy from *Between the Lines* bookshop in Great Bardfield.

Deadline for entries is **Friday 1st May 2026.**

Peter Keynton and Katrina Ralston
Art Show Organisers
bardfield.art.show@gmail.com

The Bardfield Players – recruiting!

At the moment the Players are having a well-earned rest after our recent production of *Who killed the Farmer?* However, we're still busily engaged in reading scripts, and looking to find something interesting and enjoyable to perform later in the year. Our group has some very talented people but we are always on the lookout for more! It would be particularly helpful in achieving our aim of putting on good shows, if we had one or two younger performers. We are particularly short of males aged between 20 and 40 who can act but all interested people are welcome, so if that's you please get in touch! You'll find we are a friendly group!

We also need a couple of people who could become apprentices to our technical director, Stewart Penny, and learn about the lighting, recorded music, sound effects and special effects, which are an integral part of every production. If of course there is someone who possesses that knowledge already and doesn't mind going up a ladder, all the better. If you're interested in any of these opportunities please get in touch with me asap, you will be very welcome.

Regards, **Ian. Chairman of The Bardfield Players.**

07980960082. ian.ruffle@gmail.com

HOLY SPIRIT CATHOLIC CHURCH **Great Bardfield**



Sunday Mass 9.30am

Saturday Mass 5.00pm
(held at St. John's Thaxted)

Fr Michael Britto
07917 319811

All welcome

St. Mary's Church

Great Bardfield

MUNCHKINS

Baby & Toddler GROUP



Every Tuesday morning

In Church from 10 am

Come and join us for stories, singing and
refreshments

We look forward to you seeing you.

From the Vicarage...

As I come to put down my thoughts for this month's village magazines, what feels like yet another source of uncertainty and anxiety has appeared on the world stage. The intensified conflict in the middle east is the kind of situation which we might normally expect to stand out as unique at a particular moment in its scope and impact, but I'm sure I'm not alone in feeling that circumstances like these – with unimaginable devastation for those caught up in the midst of things, and significant ripples being felt even in places far distant – are no longer quite as singular as we are used to them being.

In a month which begins with the celebration of Easter, many of us may not feel quite ready to hear a message of hope and new life. Even before considering the effect of world events on our thoughts, I call to mind so many examples of individuals and families bearing the weight of incredibly heavy burdens. We may, though, draw some comfort from the fact that those who witnessed the first Easter were also not at all ready to take in what had happened. Jesus' disciples were wholly unprepared for the empty tomb and his reappearance among them, and their initial reaction was not joyful, but confused, anxious and fearful.

To come and celebrate Easter together doesn't mean, therefore, that we need to feel that all is right with the world. In fact, perhaps the opposite is true, because a world in which all was well would not need the kind of dramatic intervention which we proclaim at this great festival. Crucifixion and resurrection are not just about celebrating the arrival of spring, but are medicine for a world in need of healing, whose echoes can then be found in the returning beauty of this season of nature.

So if you're feeling like throwing up your arms in despair and frustration about the state of things, whether close by around you, or on a global scale, or anything in between, then come and find yourself in good company in church this Easter. You will hear of people who came feeling as you do, whose lives were transformed by a new hope – not one that pretends that all is well with the world, but which refuses to accept that its troubles will be the last word.

Rev'd/Fr Alex

Services for April 2026

Services for Holy Week

Sunday 29 March – Palm Sunday

Children's activities and breakfast refreshments in Wethersfield Church from 9am

9.45am Palm Procession sets off around the village – Wethersfield

10.30am Benefice Communion Service – Wethersfield

Monday 30, Tuesday 31 March & Wednesday 1 April

9am Eucharist – Finchingfield (Mon & Wed) / Great Bardfield (Tue)

8pm Compline – Shalford

Maundy Thursday (2 April)

6.30pm Communion Service commemorating the Last Supper –
Wethersfield

8pm Sung Eucharist followed by Vigil – Little Bardfield

Good Friday (3 April)

2pm Meditations on the Cross – Shalford

2pm Solemn Service of the Lord's Passion – Little Bardfield

9pm Tenebrae – Cornish Hall End

Holy Saturday (4 April)

8pm Vigil and First Eucharist of Easter – Little Bardfield

Service times on Easter Day (5 April)

Cornish Hall End: 9am

Shalford: 9.30am

Finchingfield: 10am

Great Bardfield: 10.30am

Wethersfield: 11am

Sunday 12 April – Second Sunday of Easter

8am Holy Communion (traditional language) – Shalford

10.30am Morning Prayer – Great Bardfield

11am Family Eucharist – Wethersfield

11am Pet Service – Shalford

5pm Sung Evensong – Shalford

Sunday 19 April – Third Sunday of Easter

9am Holy Communion (traditional language) – Finchingfield

9.30am Morning Prayer – Shalford

10.30am Sung Eucharist – Great Bardfield

11am Family Service – Wethersfield

Sunday 26 April – Fourth Sunday of Easter

9.30am Parish Communion – Shalford

10.30am Morning Prayer – Great Bardfield

11am Holy Communion (traditional language) – Wethersfield

11am Scouts' Service for St George's Day – Finchingfield

5pm Sung Compline – Little Bardfield

Regular Services and Events during the week

Monday

8.45am Morning Prayer – Finchingfield

1.30pm 'Faithful Fiction' book club (1st weeks) –

Between the Lines, Great Bardfield

Tuesday

8.45am Morning Prayer – Great Bardfield

10am Baby & Toddler Group – Great Bardfield

'St Mary's Munchkins' story & song time with refreshments

Thursday

8.45am Morning Prayer – Wethersfield

10am Prayer Group (1st, 3rd & 5th weeks)

Coffee Morning (2nd & 4th weeks) – Shalford

Coffee Morning (3rd week) – Cornish Hall End

10.30am Eucharist – Little Bardfield

Friday

8.45am Morning Prayer – Shalford

Saturday

10.30am (3rd weeks) Coffee Morning – Wethersfield

Time for you...

With Julie

Newly opened: Holistic Therapies available locally at my treatment room in Great Bardfield, Blush Beauty at The Blue Egg, and (by arrangement) local home visits. So if you feel you would benefit from Reflexology, Indian Head Massage or Hopi Ear Candles, please do get in touch today to book your appointment.

I look forward to meeting you!

Julie - 07967 989124

Juliepavitt24@gmail.com



BETWEEN THE LINES

Your independent local bookshop

We offer a wide range of classic and contemporary fiction and non-fiction for all ages, plus cards, beautiful stationery and wrapping paper.

Tea and coffee served daily.

Help to support independent bookshops by using www.hive.co.uk for your online book shopping.

**Open 10.00am to 4.00pm every day
including weekends.**



Between the Lines, The Old Post Office, High St, Gt Bardfield, Braintree, Essex CM7 4SP.
Tel: 01371 810087 Email: booksbetweenthelines@gmail.com



Brook Street Deli

*Cheeses, Pies and
Cooked Meats*

*Sourdough on Fridays and other fresh
bread on Saturday*

Opening Times

Wednesday – Friday 9.00am – 5.00pm

Saturday – Sunday 9.30am – 3.00pm

Brook Street Butchers



brookstreetbutcher@gmail.com

01371 810236

Vegetables and fish also available

OPENING TIMES

Tuesday	08:30 – 17:30	Friday	08:30 – 18:00
Wednesday	08:30 – 18:00	Saturday	08:00 – 16:30
Thursday	08:30 – 18:00	Sunday	09:00 – 15:00



Limeridge Ltd
Painting & Decorating

- ※ INTERIOR & EXTERIOR
- ※ FAMILY RUN BUSINESS WITH OVER 50 YEARS EXPERIENCE
- ※ FREE NO OBLIGATION QUOTATIONS
- ※ SPECIALISING IN PERIOD PROPERTIES
- ※ VICTORIAN & GEORGIAN WINDOW REFURBISHMENT
- ※ WOOD & RESIN REPAIR CARE SPECIALIST
- ※ COMMERCIAL & DOMESTIC WORKS
- ※ RESIDENTIAL MAINTENANCE
- ※ OFFICE & RETAIL
- ※ FRIENDLY & RELIABLE



www.limeridge.CO.UK North Essex 01787 727101 & 07960 370333



Let the oil lady look after
your heating oil needs.

THE

OIL LADY

SYNDICATE BUYING POWER

Heating oil for homes and fuel for commercial properties in Essex and surrounding counties. Syndicate buying saves money and we always give you our best price every time, no hassle or need to haggle. We are reducing the number of heavy goods vehicles in our tranquil villages. Why not join your friends and neighbours saving money, syndicate membership is free and with weekly orders we have low cost heating oil when you need it.

t. 01371 238080 www.theoillady.co.uk

Croft House, Spains Hall Road, Cornish Hall End CM7 4HT e. info@theoillady.co.uk

10% discount off list price on production of this voucher

Terms and Conditions Apply | Valid until 20/12/26 | 1 Voucher per transaction



Tool & Equipment Hire

Open Mon - Fri 7:30 - 17:00

Access Equipment - Plant - Power & Lighting - Electrical Tools -
Gardening Equipment - Petrol/Diesel Generators - Cement Mixers
- General Building & Decorating - Drilling, Breaking & Fixing

FLO GAS

**Our Full Range Of Equipment Is
Available For Hire Now**

Weekend Hire Rates Available

Unit 4, Hoblongs Industrial Estate,
Chelmsford Road, Great Dunmow,
CM6 1JA | 01371 700727



 **SCAN ME**



727 Tool Hire

THE RETREAT

Beauty and Holistic SPA

Hidden away in the
Essex countryside...

Spa Garden
Barrel Sauna
Hydrotherapy Pool
Slipper baths
Relaxation suite
Private hire



Massage
Facials
Holistic treatments
Manicures/Pedicures
Tanning/Waxing
Threading

...a haven from the
bustle of daily living

Call 01371 878989
or visit

www.theretreatspa.co.uk

KITTEN + HARE

THOUGHTFUL HAIRDRESSING



Kitten and Hare is a sustainable hair salon
based in Great Bardfield Essex.

Founded by Husband and Wife and created
with a lot of love.

A family-run business with a warm
atmosphere, cool interiors, and friendly
personable service.

This is the salon where everyone is welcome.
Good vibes only.



Kids half price
tues-fri



Braintree road
Great Bardfield
cm7 4rn

K + H

Monday	Closed
Tuesday	9-6
Wednesday	9-6
Thursday	9-6
Friday	9-7
Saturday	9-6
Sunday	Closed



01371 829864



www.kittenandhare.co.uk



@kittenandhare_



We are a sustainable, vegan-friendly salon complete with a shampoo refill point.



“Providing the best feeds for your animals needs”

We stock a variety of products to suit all your animal's needs.

From Horses to Dogs, Cats, Small Animals and Poultry

Stocking Feed, Bedding, Supplements, Toys, Treats & more for all your animals!



Animal feed enquiries contact us on:

No: 07485001742

Email: info@fairyhallanimalfeeds.co.uk

Field maintenance enquiries contact Wayne on:

No: 07922567824

Email: info@fairyhallanimalfeeds.co.uk

visit us on our website!



Fairy Hall Field Maintenance:

Examples of Services Provided: Hedge Cutting, Topping, Grass Cutting, Hay Making



Fairy Hall, Fairy Hall Ln, Rayne, Braintree CM77 6TA

BARDFIELD COUNTRY INTERIORS

Decorative items for the home
Hand painted furniture
Stockist for Frenchie Paint

Iron Orchid Design, decorative transfers, stamps and moulds
Little Greene Paint co



The Old Stores, High st, Gt Bardfield CM7 4SP
01371 810110 or 07837 606631

B.L RYMAN PLUMBING AND HEATING SERVICES

- PLUMBING AND HEATING
- SHOWER AND BATHROOM INSTALLATIONS
- WALL AND FLOOR TILING
- GENERAL MAINTENANCE/ 24HR CALLOUT

LOCAL QUALITY WORKMANSHIP SINCE 1971
TEL 07867804814





Elevate Solar

**Noticed an increase
in your energy bills?**

TAKE BACK CONTROL WITH SOLAR ENERGY

SAVE
£250
WITH THIS
LEAFLET

CURRENTLY VAT FREE

BOOK YOUR FREE CONSULTATION
www.elevatesolar.co.uk
01371 875222



**HOW MUCH MONEY DO I NEED TO
RETIRE?**

**COULD I RETIRE SOONER THAN I
THINK?**

**IS HMRC SET TO INHERIT MORE
THAN MY LOVED ONES?**

**Stop guessing about your future.
Start planning it.**

Senior Partner Practice

**St
James's
Place**

Call Rory for an informal chat today



**07379 227 131
01245 522 130**

**rory.hitchcock@sjpp.co.uk
www.watchhousefp.co.uk**



**Retirement
planning**



**Tax efficient
investment
management**



**Succession &
Inheritance
planning**



WATCH HOUSE
FINANCIAL PLANNING

Watch House Financial Planning Limited is an Appointed Representative of and represents only St. James's Place Wealth Management plc (which is authorised and regulated by the Financial Conduct Authority) for the purpose of advising solely on the group's wealth management products and services, more details of which are set out on the group's website <https://www.sjp.co.uk/products>. The 'St. James's Place Partnership' and the titles 'Partner' and 'Partner Practice' are marketing terms used to describe St. James's Place representatives.

SJP Approved 19/11/2025

www.valetingdirect.com

Mobile Car Valeting in Little Bardfield, Great Bardfield, Thaxted,
Finchingfield, Saffron Walden and surrounding areas

Whatsapp: 07367 730973

Phone number: 08456 526267

01279 444399

Email: enquiries@valetingdirect.com



EASTERN GARAGE



WETHERSFIELD ROAD - FINCHINGFIELD

01371 810238

e-mail info@easterngarage.net

Most Makes of Car Serviced and Repaired by our Highly Experienced Staff

While - U - Wait Services - MOT with FREE re-test

FREE checks of Tyres, Batteries and Exhausts

FREE Accident Repair Estimates

FREE local Collection and Delivery of Vehicles

Spare Parts for Most Vehicles Available

24 Hour Breakdown and Recovery service

MAKE THE MOST OF YOUR LOCAL GARAGE





S&R Sweeps
CHIMNEY SERVICES



Your family run, professional chimney sweeps!

- Chimney and Flue sweeping
- Open Fires
- Ingle-nooks
- Wood burning stoves
- Multi-fuel stoves
- Aga/Rayburn
- Birds Nest Removal
- CCTV inspections
- Pre-install sweeping

Any active chimney/flue (lined or unlined) should be swept at least once a year to ensure it is safe and working efficiently.

To book in or for any advice on your appliance please visit our website or contact us by phone or email.

www.srsweeps.co.uk srsweeps@outlook.com

07518 690 544

Eileen Harte Therapy

PARENT & TEEN SUPPORT

FINCHINGFIELD, ESSEX

- Exam anxiety
- School avoidance
- Teen tensions
- Parent exhaustion
- Empty nest syndrome



Follow Me On Instagram

Sessions takes place in our authentic Yurt,
surrounded by nature and our
thoroughbred herd



Rates from £60 per hour face to face

Options available to work with the herd

Enquiries: eilcenhartetherapy@gmail.com

BACP member

Adlerian Psychotherapist

IAN HOLMES
Water Softener
Services

TOUCAN™
WATER SOFTENERS



Suppliers & Installers of DOMEXTRA & TOUCAN Water Softeners

• Service & Repair • Filters • Taps • Salt Tablets

We are a family run business, established in 1994 by Ian & Alicia Holmes.

Our Director, Ian Holmes, has been working in the
Water Softening industry for over 30 years.

Tel: 01371 810406 E-mail: iholmeswss@aol.com

www.ianholmeswatersofteners.co.uk

SIMMONS ELECTRICAL

Ian Simmons

Local Domestic Electrician

Fully qualified electrician based in Hellions Bumpstead, serving the local area, Cambridgeshire, Suffolk & Essex.

- 24 Hr Emergency Callout
- Fault finding
- Part/Full Rewires
- Maintenance, testing and inspection
- Indoor & outdoor installations – Lights, sockets, switches
- Fuse board replacement

All aspects of electrical work carried out, installation, repair and maintenance
All work is insured and guaranteed



Linked 

Mobile : 07910 708728

E-mail : ian.electrical1@gmail.com

Gainsford Hall Workshop



01787 238110



GAINSFORD END, TOPPESFIELD CO9 4EJ
gainsfordhallworkshop@outlook.com



CAR & LIGHT COMMERCIAL
VEHICLE SERVICING



AIR CONDITIONING



TYRES &
EXHAUSTS



MOT
TESTING



WHEEL BALANCING
& ALIGNMENT

KRW

Tree Care

Kevin Wade - Tree Surgeon

Telephone **01371 810035**

Mobile **07812 984875**



- PLUMBING
- KITCHENS
- BATHROOMS
- PLASTERING

Julian Peer

OLD COTTAGE
BRICK KILN GREEN • BLACKMORE END • CM7 4DT
jpeer2@hotmail.co.uk
M: **07814 996256**



GREAT BARDFIELD PRE SCHOOL

Situated within the Great Bardfield Primary School grounds, the Pre School aims to provide a friendly environment which is rich in learning experiences to encourage physical, creative, imaginative and social play.

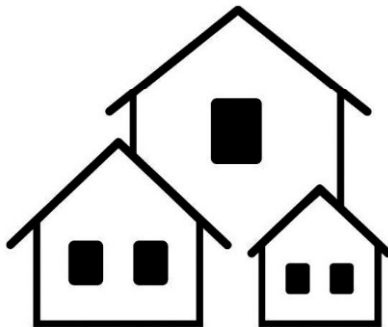
We open for 5 morning sessions a week for
Children aged 2 ½ to 4 years.

If you would like to come and see our facilities and meet our friendly experienced staff please contact the
Pre School Supervisor,
Kathy King, on 01371 811580



Great Bardfield

Your **LOCAL** Estate Agent



**Valuations Sales Mortgages
Letting & Management**

www.grayandcompany.co.uk
enquiries@grayandcompany.co.uk
01371 810154





All carried out by a fully qualified nurse with many years of experience. All in the comfort of your own home.

Call Sarah:
07484716464

Ear Care by Sarah



EAR IRRIGATION £55
PRE-HEARING AID CHECK £20

R. B. GROUNDWORKS & LANDSCAPING

SERVICES INCLUDE:

Patios - Decking - Driveways
Fencing - Drainage
Ground Clearance
Mini Digger and Driver Hire

Contact Richard Beanland

Tel: 07515 631321

email: richardbean1@live.co.uk



CHIROPODIST / PODIATRIST

ANDREW MARLOW MSSCh MBChA

REGISTERED WITH THE HEALTH AND CARE PROFESSIONS COUNCIL

Treatment in the comfort of your own home.

SOME EVENING AND WEEKEND APPOINTMENTS AVAILABLE

Tel. 07754 700950

e-mail amarlowfeet@outlook.com

Anglian Electrics



For all your Electrical Needs

- Fault Finding • Diagnosis
- Garden lights, sockets, garage, sheds, garden rooms & offices
- Faulty or New socket • Full rewire • New Fuseboxes
- EV charging point installation

Tel: 01787 278511 | 07825 348 536

www.anglianphe.co.uk • Local Family Business



10% DISCOUNT
FOR OAPs

£10 discount
if we are late for an appointment

Anglian Plumbing



PLUMBING HEATING ELECTRICAL ENGINEERS

All GAS OIL LPG & ELECTRIC – Heating Fixed Repaired or Replaced

- New boilers with 10 year warranty • Landlord gas certificates
- New bathrooms & kitchens designed & installed • Fault finding - no problem
- Radiator Power flushing • New taps • Sinks • Baths • Leaks fixed fast!
- All work fully guaranteed and insured

Tel: 01787 278511 | 07825 348 536

www.anglianphe.co.uk



10% DISCOUNT
FOR OAPs

£10 discount
if we are late for an appointment

Janus Contract Services Limited

www.januslimited.co.uk



ANIMAL FEEDS

Horse Feed
Pet Foods
Beddings & Shavings
Wild Bird Foods
Bird Feeders
Chicken Feed
Free Delivery



FENCING SUPPLIES

Field & Garden Gates
Posts & Rails/Stakes
Concrete Posts & Panels
Electric Fencing
Rabbit Netting
Sleepers
Delivery & Installation

Mounts Farm, Shalford Road, Rayne, CM77 6XA. (01376) 342111



Zero Three Care

Support Workers

**Do you want a job that is different every day?
Do you want opportunities to develop and progress?**

We are looking for enthusiastic and hardworking people to join our teams in Thaxted, Silver End and Cressing.

In this rewarding role, you will support young adults with autism, learning disabilities and complex behaviours to lead fulfilled and independent lives.

No experience necessary.

Benefits include competitive pay with enhanced night rates, and ongoing training program.



For an informal chat call Jade or Michelle on 01376 574150 or email: recruitment@zerothreecarehomes.co.uk

www.zerothreecarehomes.co.uk





novuscare

Care in the Heart of your Own Home

Are you or an elderly loved one looking for extra care and support at home in **Bardfield** or the surrounding areas? Then our local carers are here to help.

Novus Care is regulated by the Care Quality Commission and can provide a qualified carer to support your loved one in their own home from **just 30 mins per week to full-time live in care.**



For more information or to arrange a free assessment, please contact the Novus Care Team on:

T: 01268 960286 | E: hello@novus-care.com | W: novus-care.com

EXECUTIVE CARS

07971 972124

Airports – Theatre – Events – Days Out

Local / Nationwide

Call for a Competitive Quote

Reliable, Friendly, Local Lady Drivers

Pilates for *Every-Body*

Restorative, Holistic & Empowering

Group Mat Pilates Classes

All Levels Welcome

£10 for Drop-ins

4 Class Package - £32

8 Class Package - £64

Starting 8th April 2026

Every Monday : 18.30 - 19:30

Every Wednesday : 11.00 - 12.00

Great Bardfield Town Hall

For any more enquiries please contact:

CommunityMatPilates@gmail.com



**BEAUTIFUL BESPOKE FLOWERS FOR ALL
OCCASIONS**

PLEASE CALL US ON 01371 811102 OR ORDER
VIA OUR WEBSITE
WWW.THEROSEGARDENFLORISTS.CO.UK

THE BLUE EGG, BRAINTREE ROAD,
GREAT BARDFIELD, ESSEX CM7 4PY



Claire's Mobile hairdressing

Covering Great Bardfield and surrounding areas

15 years + experience

Offering a friendly and reliable home service
protective equipment worn and equipment sterilised

Please contact Claire on

07545913853



THE BELL INN
GREAT BARDFIELD

**Opening Times for lunch and dinner service
Wednesday to Saturday**

Lunch Service: 12pm to 3pm

Dinner Service: 5.30pm to 8.30pm

**Pub opens 5pm Monday and 12 noon Tuesday to Sunday
- see website for details**

The Bell looks forward to inviting both familiar faces and new visitors to experience our menus and a drink by the fire. Alongside the varied menu guests can continue to enjoy the Bell's welcoming atmosphere, well-kept local ales, fine Bardfield Vinyard wines and the character that makes *The Bell Inn* a true community hub.

01371 782030

info@thebellinngreatbardfield.co.uk www.thebellinngreatbardfield.co.uk

VISIT OUR WEBSITE BELOW
FOR MORE INFORMATION
ON VISITING TIMES



BRAINTREE RD
GREAT BARDFIELD
ESSEX
CM7 4PY

SHOP | EAT | PLAY | EXPLORE



SHOP |
THE BLUE EGG



BEAUTY SALON |
BLUSH



OUTDOOR AREA |
ANIMALS AND MORE



CAFE |
KNEAD FOOD



FLORIST |
THE ROSE GARDEN



POST OFFICE



GARDEN CENTRE |
PLANTS



CHILDREN'S NURSERY |
BARDFIELD MONTESSORI



BOTTLE BANK

shop@theblueegg.co.uk

www.theblueegg.co.uk

01371 811716



W. Hutley Ltd

**GROUNDWORK & BRICKWORK
CONTRACTORS**

**FOUNDATIONS
& GROUND BEAMS.
ALL ASPECTS OF PAVING.
DRAINAGE & WATER MAIN
INSTALLATION & REPAIRS.
DRAIN CLEARANCE.
NEW SEPTIC TANKS
& MAINTENANCE.**

**Tel: 01371 820227
Mob: 07899 958 990**

whutleygroundworks.co.uk

Countryside

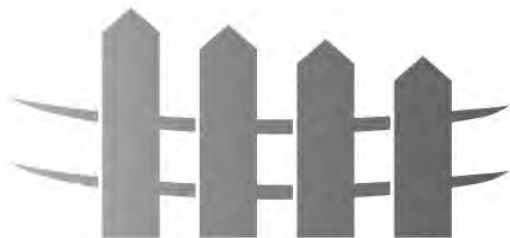
s e r v i c e s

oil boilers • heating • tanks

- Servicing
- Breakdowns
- Commissioning
- Oil Tanks

James Yearley M: 07734 801066
E: countryside.services@hotmail.com





Bell Fencing

Equestrian Agricultural Commercial Domestic

www.bellfencing.com

enquiries@bellfencing.com | 07786 914823

WWW.MOSTVALUEDPHOTOS.CO.UK

MVP

MOST | VALUED | PHOTOS



**WEDDING
PHOTOGRAPHY**

CAPTURING YOUR MOST VALUED MOMENTS
IN PHOTOS THAT LAST A LIFETIME

contact@mostvaluedphotos.co.uk

Rothwell's Carpet Cleaning

Carpet Cleaning & Stone Floor, Upholstery, Rugs

A few points that make us stand out,

Rothwell's has been in business since 1993

We're an honest local family firm.

Our large truck mounted machines mean
more cleaning & drying power
for the best results possible.

Members of both the NCCA and TACCA.

We will move the furniture.

100% satisfaction or it's FREE.

*Call Oliver and Max Campbell
for expert help today.*

01638 428 060

www.Rothwells.biz

Braintree, Halstead & Haverhill Physiotherapy & Sports Injury Clinics

Reduce pain & promote healing

*Evening & Saturday
appointments available*

01376 334040

21 Coggeshall Road, Braintree CM7 9DB

www.braintreephysiotherapyclinic.co.uk



Affordable, award winning
websites for local businesses

Whether you are selling your
products or skills on the internet
or you have a website that needs
to be made mobile-friendly, we
can help you now.

You'll be surprised how little it
costs!

Call



07503 202710

Please call Simon for a friendly chat and a free quote

www.electricwebsites.co.uk

AD

FUEL OILS LTD.

Your local answer!

**NOW
SELLING
LPG AND
AdBlue®**



Commercial and general public
welcome with easy access for all cars and vans

Yard sales from A D Fuel Oils Ltd

Banters Lane, Great Leighs, Nr. Chelmsford, Essex CM3 1QX

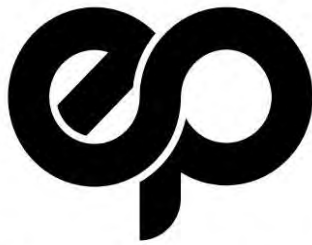
Opening Hours: Monday-Friday: 8am - 5pm

Saturday: 8am - 1pm

01245 362616 • www.adfueloils.co.uk

Products available for collection or delivery:

- Petrol
- Diesel
- Kerosene
- Gas Oil/Red Diesel
- PBO
- Paraffin
- AdBlue
- LPG
- 20 litre containers
- 205 litre containers
- Barrel dispensers
- Rotary pumps
- Boiler additive
(Additive for Aga's)



EDEN PRINT

Leave a Lasting Impression

- Leaflets • Posters • Booklets • Signs • Banners • Notepads
- Custom Shape Labels • Business Card • Letterheads
- Mugs • Greetings Cards • Raffle Tickets • NCR Pads • Plans



sales@eden-print.co.uk • www.eden-print.co.uk
Unit 7 Rippers Court, Sible Hedingham, Essex - 01787 469628



Contact Pete for all enquiries:

Mobile: 07790094646

Email: pete@fittplumbing.co.uk



Over 20 years experience as a qualified heating and plumbing engineer, based in Great Bardfield.

- New Boiler/Heating Installations and Servicing
- Boiler Breakdowns
- Bespoke Bathrooms
- Heating/Plumbing Repairs
- Rayburns
- Installation of Oil Tanks
- Unvented Systems



Delivering complete wastewater solutions

Installs | Homebuyer/seller surveys
Servicing | Repairs | Emptying

owlshall.co.uk

Service Department:
01371 504048
service@owlshall.co.uk

Installations Department:
01371 850698
sales@owlshall.co.uk

Visit our
online store:
owlshall.co.uk/shop
or scan the QR code



MARTIN BALL

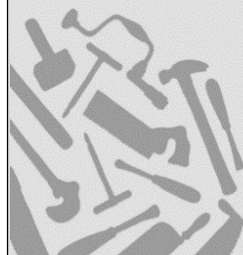
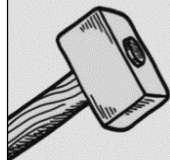
FIREWOOD & TIMBER

www.martinballfirewood.co.uk

sales@martinballfirewood.co.uk

Office • 01799 586 513
Woodyard • 01371 830 503
Mobile • 07980 258 003

Blunts Farm Yard
Thaxted
CM6 3PX



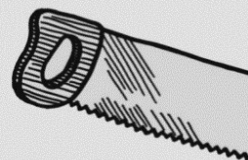
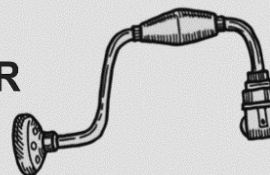
PAT QUINN

BUILDER & CARPENTER Services

- Home Repairs, Maintenance & Renovations • Plastering • Painting
- Tiling • Kitchens • Bathrooms
- Windows & Doors • Flooring & Skirting
- Roofing, Tiling & Lead Work • Exterior Installations and Repairs • Decking & Pergolas • Home Offices & Sheds • All of your carpentry and general building needs

Contact Pat Quinn on 07916 232587 or pwquinnltd@gmail.com

Over 40 years of experience working as a builder and carpenter on a range of project sizes; has vast experience working on period properties.



NOW OPEN



**FIND US BEHIND THE VINE PUB
CM7 4SR**

**TO BOOK CALL 07395700478
WALK INS WELCOME**

**THAXTED
FESTIVAL**

A Summer of Music

Classical • Opera • Jazz • Family

19 June to 12 July 2026
www.thaxtedfestival.co.uk

OperaBeatz!



Sam Every 'Little' Big Band



**Emma
Smith**

Ultimate Film Music!





The perfect alternative to timber sash windows

The Bygone Collection is the flagship range of Sash Windows, featuring the most exacting detail, innovative elements, and a perfect finish to ensure you fit the very best sash windows you can to your home.

Our range is designed to satisfy the requirements of modern windows and to comply with current building regulations. But most of all for the windows to blend seamlessly into their surroundings and to retain the character, charm and period feel of your home.



To find your local Master Installer visit
www.masterframe.co.uk
Tel: 01376 510410

WE NEED YOU!

at FINCHINGFIELD CARPET BOWLS CLUB

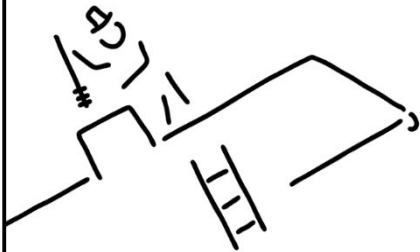


WE ARE LOOKING FOR NEW MEMBERS.

If you are interested in trying a new sport or to meet new friends come along and try your hand.

We are a friendly carpet bowls club who meet in **Finchingfield Village Hall** on **Thursday** evenings **7pm**. All the equipment is supplied so no expensive outlay and we play with smaller lighter bowls than those used outside. Our club plays in the North West Essex league and also play friendly matches against other local clubs.

Please come along on a Thursday evening or if you need more information contact John, 01787 461076 or 07952176379



- ✓ Traditional and rotary power sweeping
- ✓ Servicing open fires and wood burners for maximum efficiency
 - ✓ Nests and bee hive removal
- ✓ Chimney inspections with HD camera
 - ✓ All swept chimneys inspected.
 - ✓ N.C.A.S. Certificates issued
- ✓ Relevant certificates for insurance purposes, including thatched properties



HETAS
APPROVED
PUBLIC
LIABILITY
INSURANCE

Andrew Smith
andrewgbsmith@gmail.com
07485 038 299 or 01787 471 161



Dog Friendly





The Hawthorns
BRAINTREE

DINE IN WITH US

All-inclusive living at the Hawthorns retirement communities means you can relax and enjoy restaurant-quality meals in sociable dining rooms with no need to venture out for shopping or do the washing up.

Chefs use a thoughtful approach to develop nutritional and delicious menus, offering choices at every meal to suit all tastes and dietary requirements.

01376 778212 | hawthornsretirement.co.uk

Meadow Park | Tortoiseshell Way | Braintree | Essex | CM7 1TD

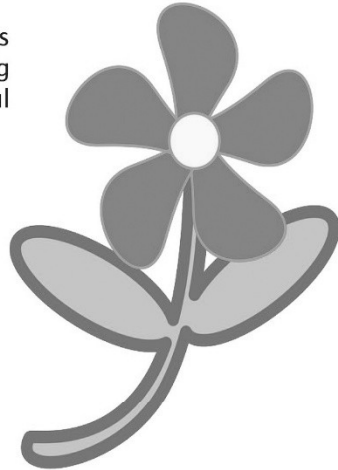
in partnership with
mind
for better mental health
in West Essex

KEEP GROWING

SOCIAL AND THERAPEUTIC HORTICULTURE PROJECT
Bardfield Vineyard and Great Lodge Garden

The KEEP GROWING project supports adults with mental health issues using gardening and working on a vineyard in a beautiful rural setting. It is free of charge.

- ◆ Improve mental and physical wellbeing
- ◆ Learn new skills in a structured and supportive environment
- ◆ Improve confidence and self-esteem
- ◆ Reduce loneliness and isolation
- ◆ Manage stress and anxiety
- ◆ Meet new people



There is the opportunity to take part in the following:

- ◆ Gardening tasks
- ◆ Vineyard tasks
- ◆ Craft activities
- ◆ Nature walks
- ◆ Alpaca feeding

For further information and to join the project please contact;

Rebecca Jordan on 07961078522 or

Claire Griffiths on 07983 823388

Email: rebecca@greatlodge.co.uk

Bardfield Vineyard and Great Lodge Garden

Great Bardfield, Braintree, CM7 4QD

Project takes place every Tuesday morning 9.30 – 12.30, refreshments provided



ROE ENVIRONMENTAL LTD

Working for the Environment

Family Run Business since 1953



Domestic services offered:

- Septic Tank, Cesspool & Treatment Plant emptying.
- Drain blockage clearance
- Pump repairs and replacements
- Treatment Plant installation
- Servicing and maintenance
- Drain CCTV surveys and inspections
- Replacement Manhole lids / covers
- Emergency response 24/7



**Please take photo
of me and keep
on your phone**



Fleet Farm, Fambridge Road, North Fambridge, Chelmsford, Essex CM3 6NB

T: 01621 740704

E: enquiries@roeenv.co.uk www.roeenv.co.uk

CODE: ROE011



Call for new members!



The Bardfield Players was **established in the 1920's** - but has been managed very successfully by Ian Ruffle since 1999.



We are award winning members of the North Essex Theatre Guild and our aim is to put on two productions per year—normally May and November.

We have several opportunities for:

- **Set Builders**
- **Costumes/Make-up/Hair**
- **Stage Management**
- **Actors—all abilities welcome!**



We would be delighted to hear from you—come and be part of our friendly and dedicated troop.

For more information contact:

Ian Ruffle. T: 07980 960082

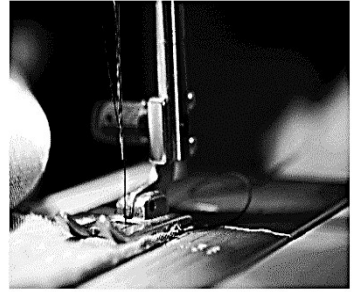
E: ian.ruffle@gmail.com



Great Bardfield Town Hall

Those Little Sewing Jobs? Look No Further!

Friendly and locally based, please contact Lisa for a free, no obligation consultation and advice.



L9pope@gmail.com 07941 129297

Blinds
Cushions
Table Runners
Napkins
Soft Furnishing Alterations
Clothes Alterations

Barty's
OVEN
Cleaning Services

Call: 07837 294 686

**Do you want a clean oven?
Are you too busy to spare the time?**

Let Barty's Oven Cleaning Service help you

Bringing the 'sparkle' back to your appliances!



Ovens • Grills • Extractors • BBQ's • Microwaves • Hobs
Ranges • Aga's • replacement bulbs and filters • Combi Ovens

SCALE INVADER

Are you constantly
battling with
limescale?



Here's the
solution

www.scaleinvader.com
07906891667
info@scaleinvader.com

- ✓ Reduces limescale
- ✓ No maintenance, no power
- ✓ Saves money on electric/gas bills
- ✓ Just fit & forget
- ✓ Easy to install
- ✓ Money back guarantee
- ✓ No cutting of pipe work

PLUMBING AND HEATING

- ✓ Central heating installation and maintenance
- ✓ Oil boiler installation, service and repair
- ✓ Oil tank replacement
- ✓ Unvented cylinder installation service and repair

Call P Burton on: 07906891667

RECOMMENDED
PLUMBER
"our reputation is in our name"



Mercer & Hughes Veterinary Surgery



Great Dunmow
01371 872836

5-6 Chelmsford Road Ind. Estate
Great Dunmow CM6 1HD

Saffron Walden

01799 522082

14 Radwinter Road
Saffron Walden
Essex CB11 3JB

Stansted

01279 813780

80 Cambridge Road
Stansted Mountfitchet
Essex CM24 8DA

Braintree

01376 743893

175 - 179 Church Lane
Bocking Braintree
Essex CM7 5SG



24HR EMERGENCY SERVICE



www.mercerandhughes.co.uk

R & D Painting and Decorating Service

**Call mobile 07501 968205
or Email robertcandler@aol.com**

External and internal
MDF panelling
Rotten windows

Free quotes, no job too small

Robert Candler



Call IAN TIMOTHY on 01223 892027

BOILERCARE

OIL AND GAS BOILER ENGINEER

CORGI



REGISTERED

**CENTRAL HEATING MAINTENANCE & REPAIR SERVICE
FOR ALL YOUR GAS & OIL BOILERS ALSO RAYBURNS**

R. Wheeler



Roofing Services

TILING SLATING LEADWORK GUTTERING
FLAT ROOFS REPAIRS

Home: 01371 811308

Mobile: 07951 349837

**Free Estimate All Work Guaranteed
25 Years Experience**

PARAGON SCHOOL OF FURNITURE RESTORATION



SHORT COURSES IN

- ◆ Furniture Restoration
- ◆ French Polishing
- ◆ Scratch Repair
- ◆ Veneering
- ◆ Chair Seating
- ◆ Oil & Water Gilding
- ◆ Gilding Restoration
- ◆ Japanning

Furniture Restoration Classes
CALL FOR AVAILABILITY

**FURNITURE RESTORATION
SERVICE ALSO AVAILABLE**

T: 01371 832 032 M: 07870 907 497

email: mail@paragoncourses.co.uk

www.paragoncourses.co.uk

Town & Country



Sweeps

Chimney Services

**CLEAN CHIMNEYS ARE SAFER
CHIMNEYS**

Chimney Sweeping
Stove Servicing & Maintenance
Nest Removals
CCTV Inspections
Bird Guard & Cap Fitting
and much more

07703 740638

www.townandcountrysweeps.com





Aqualife Gallery

Design - Build - Maintenance

Ponds, Streams, Waterfalls, Fountains & Wildlife Ponds
Damp & Bog gardens

Cleaning, Maintenance & Renovation service for existing Ponds

Call Keith: 07468 451416

Email: keith@aqualifegallery.co.uk



THAXTED BUILDERS LTD

Est. 1966



**Carpentry & Joinery - Brickwork - Lime Plastering
Roofing - Restorations of Listed Building
New Build - NHBC Registered**

Phone: Robert Johnson 07802 414 051

Email: thaxtedbuilders@aol.com

KS1/KS2 TUITION

Qualified Primary School Teacher offering private tuition for English, Maths and Science.

Personalised lessons, catering for individual needs.

Enhanced DBS certified. Based Gt. Saling

Enquiries Emma 07714939162



BELLRINGING

Learn to ring the *world's biggest musical instrument!*

- Free Lessons
- All-Weather Community Activity
- Centuries-Old British Skill
- Multi-Generational Friendships
- Adults & Children (10yrs+) Welcome

Find out more:

BardfieldBellringers@gmail.com
01371 810209 or 07795 280647

Begin a new *physical, mental, & technical* challenge today!

Mobile Library stopping in Dunmow Road

On the following dates

**16-Apr, 7-May, 28-May, 18-Jun, 9-Jul, 30-Jul,
20-Aug, 10-Sept, 1-Oct, 22-Oct, 12-Nov, 3-Dec**

Between 11.10 and 11.45am

A. KEMP GARDEN SERVICES

GARDEN MAINTENANCE & LANDSCAPING

Lawn Care Specialist, Cultivated Turf Supplied and Laid, Planting and Pruning,
also Fencing, Patios & Block Paving Driveways

For **FREE** Estimates call

ALAN on 01371 811972 or 07866 519290

Fully Insured and Qualified



Jaggar

ACCOUNTANTS

A friendly and forward-thinking accountants, based in Great Bardfield

Our Services

Each business is unique in their requirements and needs so our services can be tailored to cover all that you need

- ✓ Year-end Accounts Production
- ✓ Business Tax Returns
- ✓ Personal Tax Returns
- ✓ VAT Returns
- ✓ Payroll
- ✓ Bookkeeping
- ✓ Management Accounts
- ✓ Business Support & Advice



jaggaraccountants.co.uk

hello@jaggaraccountants.co.uk

01371 513666



Town Hall Diary

April 2026

Tuesday 7 th	Choir	8.00pm
Wednesday 8 th	Pilates	10.30am
	Parish council meeting	7.00pm
Friday 10 th	Cinema club	7.30pm
Saturday 11 th	Cricket club bingo	7.00pm
Monday 13 th	Pilates	6.00pm
Tuesday 14 th	Dance fit class	9.30am
	Mobility & Balance	10.30am
	Tuesday club	2.00pm
	Choir	8.00pm
Wednesday 15 th	Pilates	10.30am
Saturday 18 th	GBHS	6.30pm
Monday 20 th	Pilates	6.00pm
Tuesday 21 st	Dance fit class	9.30am
	Mobility & Balance	10.30am
	Choir	8.00pm
Wednesday 22 nd	Pilates	10.30am
Saturday 25 th	King Henry VIII	7.30pm
Monday 27 th	Pilates	6.00pm
Tuesday 28 th	Dance fit class	9.30am
	Mobility & Balance	10.30am
	Choir	8.00pm
Wednesday 29 th	Pilates	10.30am

For private parties, social activities, exercise classes, meetings.
Excellent facilities, including spacious kitchen and catering equipment, sound
system with hearing loop, free Wi-Fi, stage and meeting rooms.

Enquiries and bookings: bardfieldtownbookings@gmail.com

Great Bardfield Parish

Chair of the Parish Council Carolynne Ruffle 810986
Clerk to the Parish Council Kate Fox clerk@greatbardfield-pc.gov.uk 810111
Councillors Janet Dyson 07957 483207
Iain Graham 07831 595555
Darren Hockley 810836
Peter Walmsley 07843 498253
Mark Wells 07788 318118
Richard Winsborough 07917462320

Little Bardfield Parish

Chair of the Parish Council Andrew Davies cllr.adavies@littlebardfield-pc.gov.uk
Clerk to the Parish Council Sophie Wolker clerk@littlebardfield-pc.gov.uk

Braintree District Council

Councillors Cllr Michael Staines 07922 487666
Cllr Mark Ault 07903 744481

Uttlesford District Council

Councillor Cllr Mike Tayler cllrtayler@uttlesford.gov.uk
Police for non-emergency enquiries dial 101
for emergency enquiries dial 999

1st Finchingfield Scout Group Mark Wells 810447 mark.2millside@btinternet.com

Bardfield Charities Nick Holland 07795 280647

Bardfield Horticultural Society Linda Prior 07969 184845

Bardfield Players Ian Ruffle 810986

Gt Bardfield Allotments Adrian Thomson

Gt Bardfield Bell Ringers Nick & Sarah Holland 810209

Gt Bardfield Historical Society tim_regan82@hotmail.com

Gt Bardfield Pre-School Kathy King 811580

Gt Bardfield Primary School admin@greatbardfield.essex.sch.uk 810252

Muddogs Youth Football Tony Clarke-Holland 07710 506007

www.muddogs.co.uk/tch@thebcf.co.uk

Tuesday Club Marilyn Edwards mazjedwards@yahoo.co.uk

Parish Priest Gt & Lt Bardfield Fr Alex Shannon 810309/07483 878659

Catholic Priest Fr Michael Britto 07917 319811

Town Hall Bookings bardfieldtownbookings@gmail.com

Refuse Collections Gt Bardfield Tuesdays from 7.00am

Lt Bardfield Thursdays from 7.00am

Bawden Room Every Sunday & Bank Holiday from Easter
to the end of September 2.00 – 4.00pm

Community Information Point Thursday & Saturday 10.00am – 12.00 noon 811975

The Samaritans 01245 357357