



Annual Parish Meeting for the Residents of Great Bardfield



8.00pm Friday 27th April 2012
Great Bardfield Town Hall

Cover photograph: Planting of the 2012 Jubilee oak on the causeway by Bardfield Primary School children, with Doug Joyce, Ian Ruffle and Parish Council members



Contents

Agenda	2
Chairman's Introduction	3
Minutes of the meeting held 27 th April 2011	4
Parish Council Report	13
Financial Report	15
Income and Expenditure Charts	16
District Council Report	18
Essex County Council Report	19
Great Bardfield Charities	23
Great Bardfield Town Hall	24
The Bardfield Players	24
The Bardfield Times Report and Accounts	25
Bardfield Allotment Group	26
Bardfield Oxlip Recovery Programme	27
Plantings at Long Green	28
Bardfield Horticultural Society	29
Great Bardfield Primary School	30
Great Bardfield Primary School PTA	32
Bardfield Carpet Bowls Club	33
Freshwell Health Centre	34
CREAMER Fund	35
Great Bardfield FC	36
Great Bardfield Historical Society	39
Great Bardfield Community Choir	41
Great Bardfield Youth Club	41
Tuesday Club	43
Council Members Details	44



Great Bardfield Parish Council

Annual Parish Meeting

To be held Friday 27th April at 8.00 pm in the Town Hall

Agenda

1. Chairman's introduction
2. Apologies
3. Minutes of the meeting held April 27th 2011
4. Matters arising
5. Rural policing: Sgt Nick Williams
6. Parish Council report and accounts
7. District Council report
8. County Council report
9. School report
10. Charities report and accounts
11. Town Hall report and accounts
12. Bardfield Times report and accounts
13. Items of report
14. Closing remarks

The Annual Parish Report containing the above reports and those of other village organisations. is available on the evening to all those attending and additional copies will be available via the Community Information Point.



Chairman's Introduction

It is a pleasure to introduce the Annual Report on the work of Great Bardfield Parish Council and the many organisations in the village.

A glance through the pages of this report will show that Great Bardfield is a lively, vibrant community with so much going on it is sometimes difficult to decide what to do, and there is often



pressure on bookings for the Town Hall and other village venues. The activities on offer cater for a wide range of ages and tastes. For example, the age of participants in last year's Boules competition ranged from 9 – 85. On completing the application form for the Village of the Year competition, we recently identified 30 clubs and organisations and 16 regular village events such as the annual Garage Sale, and the Horticultural and Arts and Crafts Shows.

We also investigated the employment opportunities available in the village, and found that there is a growing number of small businesses. As many as 300 people are employed in the village, including many local people, on a full or part-time basis. The increasing numbers of self-employed people in the village can take advantage of IT developments and a local business networking group to work locally, avoid commuting and have an improved quality of life.

The Parish Council has worked hard to improve communication and dissemination of information in the village. The Community Information Point is an important resource, providing an excellent source of advice and information, or simply a chance to drop in for a chat. There are plans to develop the CIP and increase the services available. The Council's award-winning website gives details of council business, local groups, events, businesses and a village calendar of events. It is pleasing to report that several long-term projects have moved forward this year. There is good progress on the Pavilion project and work has begun on the Housing Association development, designed to meet the needs of local people. However, we are not complacent. In light of the current national financial situation the Council voted not to increase the Parish Precept this year. If this were to continue we would find it harder to provide the level and quality of services we have been used to. Sources of funding for specific projects such as the new Pavilion are getting harder to access and we have had to argue the case very strongly for improving or extending services such as the CIP, bus services and support for leisure facilities. Without doubt, despite all the advantages of living in a beautiful rural area, we do suffer from a degree of deprivation in terms of access to services which are taken for granted in urban areas.

To keep our community alive, and to keep the balance of ages and the diversity of our population, we need to provide the infrastructure to ensure the community can respond to the changing lifestyles and demands of the 21st century. Thanks to the many people who give generously of their time, skills and talents to make Great Bardfield such a lively, active community.

Janet Dyson, Chairman



Great Bardfield Parish Council

Minutes of the Parish Meeting held on April 27th 2011

In attendance: Residents of the parish, Parish, District and County Councillors and Mr Simon Olney, of Electric Websites.

1. Chairman's Introduction

The Chairman was pleased to introduce the Annual Report on the work of Great Bardfield Parish Council. As ever, the Council has been strongly supported by the many people who work so hard to make Great Bardfield such a lively, active community. The range of interesting and enjoyable activities on offer is impressive and growing all the time. The last year has seen the development of a film club, organised by the Bardfield Times Committee, the Community Choir now has nearly fifty members, there is a waiting list for the new allotments, the number of local football teams has increased and most evenings as one group leaves the Town Hall another group is queuing to come in! The village is well served by the team of volunteers who produce and deliver the Bardfield Times.

The Chairman noted that among the many things to look forward to during the coming months, was the next performance of the Bardfield Payers, the Guitar Festival, the Garage Sale, the Town Hall Arts and Crafts weekend, Open Gardens Day and, of course, the Boules Tournament. None of these events could happen without the organisational skills and good will of a very large number of people and she wished to thank all those involved.

The Community Information Point, staffed by Jenny Rooney, continues to be well used, providing an excellent source of advice and information, or simply an opportunity to chat. The Council's new website has been planned to be a useful source of information not only about the Parish Council but on all aspects of the village. There are some projects still to be completed, the realisation of our long awaited and much needed pavilion, for example, and the Housing Association development which has been designed to meet the needs of local people.

She concluded by thanking all members of the Council, and Kate Fox, Parish Clerk, for their hard work over the last four years. It is likely that, in the future, parish councils will be given greater responsibilities for providing services in their communities. We welcome the opportunities this will bring as we believe it will enable Parish Councils to tailor services to the needs of their communities and provide best value for money.

2. Apologies

These were received from Cllr Roger Walters and Pat and Ray Coles.

3. Minutes of the Meeting held 7 May 2010

These were approved and signed as a true record of the Meeting; proposed Jenny Rooney, seconded Mick Gell.

4. Matters Arising

There were no matters arising.



5. Great Bardfield Website

Mr Simon Olney gave an illustrated presentation on the new website to be launched at the end of April. It was a vast improvement on the existing containing such facilities as an events calendar, a rolling news area and an opportunity to feedback information. It contained details of business in the parish – including those at the Bardfield Centre – together with biographies of the various community groups. Over time it was intended to expand this area and suggestions were welcome.

6. Parish Council Report and Accounts 2011

Cllr Ruffle, Vice Chair, introduced the report and described one of the major projects for the year, which was to progress with the plans for **Affordable Housing** for local people in the village. This project was established following a housing needs survey.

During the year a site has been found on Braintree Road, and plans drawn up for 12 one, two and three bedroom houses. A public meeting took place in October, at the Town Hall, and was well attended. Though some concerns were raised by local residents, the majority of comments were positive. At the point of writing this report, a planning application had been submitted by the Housing Association and we await a decision. She emphasised that the Parish Council were committed to ensuring that local people have priority over these houses once built.

The **Pavilion Project** has continued to be one of our major objectives despite a somewhat disappointing 2010. Local fundraising continues with the support of many individuals and groups in the village but the availability of grant funding is more limited than a few years ago and often restricted to deprived urban areas. In the last few months, however, the Fund Raising Committee has been awarded a £25,000 grant by Greenfields Community Housing.

Following the disappointment, of not receiving the much larger expected grant, the scope of the project has had to be reviewed. It remains the objective to replace the current, tired, pavilion and provide much needed sporting and community facilities at this site. In the meantime the grounds, current pavilion and play area continue to be maintained. Unfortunately this site does suffer some vandalism which requires attention. Our village handyman, Ian Ruffle, has had to replace a number of fence posts this year and repair play equipment. We are in the process of purchasing and installing a new item of play equipment funded by a grant obtained by Kate Fox, our Parish Clerk.

One of the more successful fund-raising activities this year has been the Photographic competition which resulted in the production of a **2011 Calendar** and greeting cards with super images of the village and its people.

The **Quiet Space** behind the Town Hall has been cleared and planted with shrubs and trees. The access to this area has been improved and it is now accessible. It is also hoped to install a bench and it will remain a dog-free zone.

The **Oxlip Project** came to an end in 2010 after a very successful re-introduction of the Bardfield Oxlip to a number of locations in and near the village. Pipers Meadow was returned to the care of the Parish Council and who are now responsible for maintaining this land. Our thanks go to Doug Joyce for all his work with this project and his continued support to us in an advisory capacity.

More recently a **new permissive path** has been opened up, with support of the landowner, Nicholas Reed and the Essex County Council's Parish Paths Partnership. This path provides a safe and very pleasant route for walkers and cyclists to the Blue Egg and Post Office.



Parking and traffic are a perennial problem in this village and the Council have had to way up the demands of maintaining a safe traffic flow with the need for parking for residents.

In 2010, after consultation with local residents some limited parking restrictions were introduced in Bridge Street to help improve flow of traffic without increasing its speed. It was decided not to take the same action at the junction of Bell Lane and the High Street where it has been proposed to restrict parking to enable over-large lorries to negotiate the corners. It was decided that the parking restrictions proposed by Essex Highways were, in this instance, excessive and would have caused more issues for local residents in an area of limited off-street parking.

A good relationship with the **School Council**, which comprises pupil representatives for each class, is on going. The Officers of the School Council have attended a Parish Council meeting to report to us on issues they and other pupils of the school have noted in the village.

The Parish Council also supported the setting up of the **allotments** on land in Vine Meadow and remedial works to **The Cage**, our local lock-up.

Planning applications can take up a substantial amount of time. We have considered and commented on nearly 20 applications this year, twice that for the previous year. The majority have been proposed extensions to existing houses though we have also considered the installation of a ménage and the demolition of an existing property and a rebuild on the site. There have been planning applications associated with two of our most important Listed properties, the Anne of Cleves Barn at Great Lodge and, more recently, for a new property in the grounds of Place House. There were also nine applications for various tree works.

The Council have recently been working on a new Parish Council website to be launched on the evening of the annual meeting. It will include a village calendar to keep everyone up to date with events and provide a further means of promoting such activities.

Cllr Ruffle concluded by thanking those present for their support during the year and asked the Clerk to present the financial statement for the 2010/11 year.

Financial Report and Accounts

Funding It had been a more challenging year as far as grant funding was concerned but, even so, over £6000 was achieved in small grants with a much larger grant of £25,000 from the Community Investment Partnership towards the pavilion project.

Precept: Although every effort has been made to minimise any increase in the Precept, as a result of the continued freeze on the Parish Support Grant, the increase in VAT and general running costs, a small increase of £650 for the 2011/12 year was requested. This has resulted in a slight increase in the parish element of the Council Tax equating to just 2.5p per week, per household.

Change of Account: To maximize income in view of appalling interest rates, reserve funds previously held with Santander were transferred to a Fixed Term Deposit account with Lloyds Bank, which provides an additional 2%.

In addition to general on-going expenditure, maintenance and repairs, the following was approved:

- Purchase and installation of a litter bin and a dog bin at the cost of £510
- Long Green – purchase of plants and seeds to improve and sustain the area £400
- Parish Council & Community Website £700 (50% remainder on completion)



Pie Charts

The Clerk drew attention to the illustrations provided in the report, which gave a general overview of income and expenditure for the 2010/11 financial year. Full accounts will be available when they are submitted to the Audit Commission and a notice will be posted advising when accounts may be inspected.

7a. District Council Report

This was presented by Cllr Simon Walsh who said it had been another challenging year for your District Council, funds still remain in Iceland and legal proceedings continue to recover the remaining moneys.

The Council Tax precept has remained the same as last year, and reflects the hard work done by the Council's finance team, by the different departments and cabinet members in terms of controlling costs.

Despite these pressures, Braintree District has responded to public concerns over some budgetary proposals, such as the health walks programme, which will continue in its present form for a further 12 months.

Keeping the District Clean and Green has been an important initiative, with its flagship 'Green Heart' project investing significant amounts of money in community and school environmental improvement projects. The 'Green Heart' is a good example of how with some financial help from the Council, communities can come together and achieve real outcomes for their area.

We have also engaged with younger children, through our Democracy X Factor event, which involved 78 pupils from 18 primary schools across the District. Ideas from these sessions, and they are all very good ideas have been voted on and the leading proposals will be developed by the Council or by partner organisations.

Recycling rates continue to improve, regularly clearing 50% every month. The Household Recycling Centre at Shalford is now closed, and a brand new facility at Braintree's Springwood Drive now fully operational, and much easier to use with ground level skip access, meaning no more steps to climb!

The Braintree Local Area Committee, chaired by Simon comes to an end this month, and will probably be succeeded by a hybrid of parish clusters and the County's Area Forums. Over the period the Local Committee has existed, it has been able to support through a Members' budget many local projects, many of which would not have succeeded without this help. They have discussed various consultations and received petitions. One concerning the closing time of the Public Toilets by Braintree Bus Station caused a great deal of debate.

Cllr Walsh said that the balance between Rural and Urban interests continues to exercise many, and knows it is a live topic in many parishes. It is hoped that what replaces the Local Committee provides a strong mechanism to support those rural interests.

Over the past year Simon has served on the Audit Committee as well as the Local Committee, and has been involved in various ad-hoc grant awarding committees too.

John has continued his roles as member of the Standards Board, the Licensing Committee, and the Braintree Local Committee. In response to a question from the floor it was confirmed that of the £5M originally invested in the Icelandic banks, £3.5M was still held there although it was hoped that eventually more of these funds will be released.

Cllr Walsh will not be standing as a District Councillor in the forthcoming elections, and he wished to thank Cllr Finbow for all his hard work and support during the past four years.



7b. County Council Report

In the absence of CC Roger Walters, Cllr Walsh presented this report.

Council Tax: Essex County Council were pleased to have set a new record low increase in Council Tax of 0%, made possible by the government's grant, following last year's record of 1.9%.

Pledges: The Leader of ECC has set out an ambitious programme of work at for the year ahead and aimed to increase the volume and scope of customer transactions carried out on-line by more than 20%. It hoped to save £50M from back office and procurement processes in 2011/12 but increase support to vulnerable adults and children.

Among other aims were to:

- increase educational achievement and skills by working with and supporting schools to help them deliver sustainable improvements in English and Maths at all age ranges
- maintain and improve the highway network by investing £4M to fix potholes and other damage to restore our road network to its pre-2010/11 winter condition
- make communities safer by enabling them to reduce anti-social behaviour and fear of crime through 12 local community engagement schemes and projects
- promote sustainable economic growth by investing at least £1m to help Essex firms create jobs and take advantage of new market opportunities, including supporting 250 new apprenticeships
- enhance the environment and reduce and recycle waste by holding 100 'Love where you Live' events with local communities to create a cleaner, greener Essex
- promote public health and wellbeing by providing 150 more sport and health related activities for 30,000 Young People in both schools and their local communities

Transformation

The five main components of the Transformation programme:

1. **Procurement** – improving the value for money we get from external contracts, as well as managing demand and identifying new market opportunities.
2. **New Ways of Working** – A programme of radical cultural, technological and structural change, and making best use of our assets.
3. **Productivity** – Improving service efficiency and identifying areas to work more quickly or economically without affecting results.
4. **Partnership and Service Redesign** – Commissioning work together with other partners, redesigning and modernising our services.
5. **Sharing and Trading Services** – Working with partners to share services, and trading with other organisations to generate income to the county.



The coming year, 2011-12, will see further reductions in our operating costs as the Council transforms. The New Ways of Working, in particular, has some exciting projects that will increasingly make a difference throughout the year:

- The website will get even better – visits are already up 19% – and will start to offer more ability to get things done direct, without having to ring anyone or send in long paper forms;
- Our contact centre will become more responsive in dealing with your queries;
- Adult social care will further personal choice through pre-paid payment cards;
- Our ability to assess referrals to children's social care will be enhanced;
- Productivity will increase and property costs will progressively reduce, as staff increasingly work flexibly and from a variety of locations using innovative technology to enable secure remote access;
- Business process techniques throughout our services will improve effectiveness;
- Staff productivity will be increased through the adoption of a sector-leading performance management approach;
- Corporate costs will be reduced in line with customers' needs.

The Year Ahead

The Big Society – Good for Essex prospectus was released in March, detailing how it will build social capital, transform services, and empower communities. There is an enormous array of activity going on in each of these areas up and down the county. Find out more at <http://bit.ly/goodforessex>.

Essex also is taking part in a number of pilots aimed at trialling new and innovative approaches to local government.

A number of questions were taken from the floor. Cllr Walsh was able to confirm that regrettably escorts would no longer be provided for Bardfield home to school transport. On a positive note, ECC did not have funds in the Icelandic banks, and additional funding had been provided by central government to deal with pot holes.

8. School Report

A very detailed and interesting report was provided in the Annual report presented on the evening. Cllr Dyson, as Chair of Governors, highlighted some of the items mentioned.

The outcome of the Ofsted inspection was very favourable and inspectors found that the pupils had good basic skills, positive attitudes and habitual exemplary punctuality and attendance. Pupils personal development outcomes were good with some deemed outstanding and the high levels of competence in ICT were praised. Year 6 pupils results were above Essex and National figures in English and significantly above in Maths.

The primary school were proud to be a 'training' school and have welcomed five teacher trainees from both Cambridge and Anglia Ruskin Universities over the last year.

The children have been involved in numerous activities led by their class councils and Senior School Council. One of their tasks is to organise charity events raising funds for good causes. In October, the children presented over 150 'smile boxes' to George Mills who sent them to a Family Centre in Chernogiv near Chernobyl. In November, for **Children in Need Day**, the children wore spots or odd clothing raising £227. In March, over £300 was raised for Comic



Relief, with the children setting about making a “Bardfield Book of Records” suggested by Eleanor Grant a Year 6 pupil. Records included, wellie throwing, strongest paper bridge, highest paper tower, fastest skipper, and so on.

The children are fortunate to be able to learn a modern foreign language across the whole school, and a French Cafe was set up, with the Year 6 children taking on the mantle of waiters and waitresses, speaking French and making conversation with their customers who enjoyed croissants, croque monsieurs and pain aux chocolats.

The children continue to be involved in planting and counting the Oxlips and are grateful to all concerned to be part of this historic project.

Staff and pupils are very appreciative of the work the PTA. Events such as Firework night, the fabulous Victorian Fayre, Bingo night, fashion show and of course the School fete raise much needed funds for the school especially as budgets have been cut and our number on role is decreasing.

The Headteacher, Mrs Barney, wished to say that she and staff are indebted to the people of the village who support the many events.

9. Charities Report and Accounts

Unfortunately there was no representative present on the evening but the following report had been received from the Treasurer.

The Charities Committee is accountable to the Great Bardfield Parish Council, and the administering Officers for the Year 2010 – 2011 remain as follows:

Pat Coles – Chair
Nominative Trustee

Tony Hayward – Treasurer
Nominative Trustee

Brenda Poston – Secretary
Co-optative Trustee

Debbie Rogers
Co-optative Trustee

Alan Bray – Ex Officio
Advisory Trustee

Alongside the quarterly meetings, there have been two additional meetings during the year, including an extraordinary meeting with the management team of the **Bardfield Times**.

The Charity Accounts are audited yearly by Bill Mules, and we thank him for his on-going professional support.

The Charity Expenditures over the Year April 2010 – March 2011 are outlined as follows:

Total Income plus interest: £19,441.93. Twenty-seven varied community applications from individuals and organisations within the village were considered and grants made to the value of £11,234.00. Winter fuel payments made for winter 2010 – 2011 to a value of £11,000.00. During the year our Capital funds value has increased by 6.57%, however our bank interest was only equal to 10% of that in 2010. NB – These figures may be at a variance with the audited figures which will be available at the end of June 2011.

All applications to the Charity are considered carefully and without prejudice by the Trustees, and organisations or individual villagers can approach any of the Trustees at any time



with requests for assistance in making applications. Dates of the Charity Meetings are recorded in the Bardfield Times as a reminder to those who may wish to make an application.

The Bardfield Charity was pleased to contribute to the Bardfield Times' Community Project "Bringing Cinema to Your Village".

10. Town Hall Report and Accounts

Unfortunately there was no representative present on the evening, but the following report had been submitted by Jim Bray, the Chairman.

This year has been a relatively quiet year for the Hall, with a steady bookings schedule both regular and occasional. We have a new Zumba group as a regular booking as well as the newly formed Bardfield Choir. We have held our usual mix of functions to help with Hall funds, these have all been very successful. Starting with the Art and Craft show over the spring bank holiday, this was an unusually sunny weekend. Many thanks to all involved with the running of this show, but particularly to Jill Burt and Dawn for their organising of the exhibitors and for HRS school for their display of GCSE and A level work.

We also put on another music morning in October, organised by Janet, which again filled the hall and was very much appreciated by all who attended.

On our Carols and Town Hall Draw evening at Christmas the Choir and the Brownies helped raise the volume and quality of the singing. With Ian and Carolynne again wining and dining us, this is now proving a much more popular evening. With the draw sales it also raised several hundred pounds. Thank you to the local businesses and committee members for donating prizes.

We held our annual quiz in January and with over 100 participants fed and entertained again raised a considerable sum towards the Hall funds.

Over the summer we held our 5th boules tournament and this year was again concluded with a finals afternoon when the weather allowed a small barbecue which helped boost funds further and also raised the profile of the Town Hall and Boules in Bardfield. Some passers-by did seem a little bemused at the goings on, but left us to it.

All that is achieved is very much down to a dedicated committee, together with their families and friends of the Hall helping out at various events and I take this opportunity to thank them all for their help and support over the year.

We do appreciate with other pressures on the Parish Council purse strings that the contribution it makes is money that could go elsewhere, but it does help very much with our finances and takes much of the burden off our own fund raising efforts to keep the Hall in good order for people of the village to use.

In June our new caretaking team of Sarah and Daryl Hymas started. In December the Town Hall Cottage became available for Sarah and Daryl to move in to but needed to be refurbished. This involved a complete redecoration throughout, the kitchen refitting and a new oil tank. The overall cost was around £8,000.

We have also had to replace a couple of windows in the Community Information Point (CIP) and storeroom. This summer we hope to redecorate the exterior of the whole building including the CIP, store room cottage room and cottage. This will no doubt take care of our profits for the year.

On a sad note, Cllr Ruffle wished to acknowledge the work of Mrs Audrey Brushwood, a loyal member of the Town Hall 'team' for many years, who had died recently.



11. Bardfield Times Report and Accounts

Unfortunately there was no representative present on the evening, but the following report had been submitted.

The BT team work very hard to continue to keep the magazine running and delivered free of charge to every household in the village. This is proving to be increasingly difficult as printing costs increase and therefore it has been necessary to increase the annual costs to advertise in the publication. Whilst any increase is regrettable in the current economic climate we feel it still offers local business a cost effective way to advertise their services at a fraction of the cost when compared to local newspapers and magazines.

We continue to introduce new features on a regular basis to ensure the readership have something new to peruse each month; in order to ensure we engage and include as many people as possible within the community our Guest Editorials will continue to be a regular feature. Fund raising events are also organised by the BT team. The Bardfield Cinema Club is gathering momentum and we are hoping to extend the season by showing films in the summer months; the equipment was upgraded last year thanks to funding we received from the Bardfield Charities and we have recently secured a donation from the Stansted Airport Passenger Community Fund which will go towards future screening costs. We are happy for other village organisations to hire the equipment for their own functions.

The Open Gardens Day will again be held in June this year and it is hoped that this will be as great a success as it has been in the past.

Financial Report: Full details were included in the Annual Report provided at the meeting.

The Chairman wished to record the appreciation of the Parish Council for all the hard work carried out by the various organisations committees which contributes to the life of the parish.

12. Items of Report

Cllr Dyson wished to mention the contribution of Doug Joyce for all his work with the Pipers Meadow/Oxlip project and his work at Long Green. Also to note the publication of his article in the Essex Naturalist – a copy of which can be viewed in the CIP.

13. Closing Remarks

The Chairman thanked the District and County Councillors, Mr Simon Olney for the presentation on the new website, Mr Mick Gell for his continued care of the Memorial Garden and her colleagues and the clerk for their support.

There being no further business the meeting closed at 9.30 pm



Parish Council Review 2012

As Vice Chair of the Great Bardfield Parish Council I am pleased to present the Parish Council Review for the last 12 months, i.e. May 2011 to April 2012. In the last 12 months we have held 11 full Parish Council meetings plus additional meetings on specific subjects or issues.

Following the last Parish Assembly we experienced our first Parish Council election for some years. There were eight candidates for the seven seats and, following a high turnout on polling day, the previous council members were re-elected. The members of the council continue to work well together as a team.

We have continued to make progress with a number of major projects in the last year. A year ago we were waiting to hear about the planning application submitted by English Rural Housing for our planned **Local Affordable Housing scheme**. These plans were passed and the necessary paperwork agreed to ensure that people with a link to Great Bardfield would have priority in the allocation of the houses. I'm sure you will have noticed that work has recently started on this site on Braintree Road. The scheme comprises twelve units – 1, 2 and 3 bedroom houses which will be available for rent or part-rent, part-buy. The majority of feedback we have had about the scheme and the need for local housing has been positive. We look forward to the completion of this scheme in the coming year and to people moving in.

In the last twelve months the **Pavilion Project** has been re-energised. Following the reduction in funding opportunities and money available we have revised the plans to reduce the cost of the project. The new plans were approved by Braintree District Council in the last few months. We are very grateful for the continued efforts of local people in raising funds for this project and have also continued to seek and apply for grant funding. In February we were awarded a grant of £7500 by The Big Society Fund operated by Essex County Council. Our aim is to seek funding and progress this project in 'chunks' and we hope ground works and improvements to access will start in the next 12 months.

In the meantime we continue to maintain the grounds, current pavilion and play area. We purchased and installed a new piece of play equipment in the last year – a 'flying saucer'. Unfortunately this site continues to suffer from some vandalism and plenty of litter. There is also a continual problem with dog-fouling and we are currently considering whether to ban dogs completely from the playing field area – a shame for those responsible dog-owners who clear up after their dogs.

The Parish Council supported another **Photographic Competition** which resulted in unexpectedly successful sales of Bardfield Christmas cards (three reprints in the run-up to Christmas) and another village calendar. Sales of these items resulted in additional monies towards the Pavilion Fund. The **Community Information Point** is a very successful service offered by the Parish Council. Jenny Rooney and Kate Fox provide a twice weekly drop-in centre; somewhere you can obtain information, provide feedback and collect recycling and doggy bags. We have been fortunate to obtain funding to refurbish the interior (the exterior was repainted this year, thanks to the Town Hall Management Committee) and we will also be updating our IT equipment. We plan to extend the services available at the CIP.

The new **Parish Council website** was launched in the last year and is already an award-winner. Please remember to use the website to check up on local groups and societies,



businesses and services. The website includes a village calendar of events so please let us know if you have an event you would like to be included. The Parish Council continues to have a good relationship with the **School Council** which comprises pupil representatives for each class. The Officers of the School Council have attended two Parish Council meetings this year to report on issues they and other pupils of the school have noted in the village. They have been particularly concerned with litter, dog mess, large lorries and speeding vehicles (the same as the rest of us).

This year we have considered around 20 **planning applications**, including two extensions, two demolish and rebuilds and several applications for a variety of improvements such as replacement windows, roofs etc. We have also considered seven applications for work on trees. Our comments are submitted to Braintree District Council and taken into consideration during the planning process.

This year sees the **Queen's Diamond Jubilee**. Unfortunately, no additional funding is available for us to contribute to celebrations as provided at previous celebrations. However, the Parish Council have offered to help fund a children's tea party, a mug for each child in the village school and a 'Jubilee' bench will soon be sited in the **Quiet Space** behind the Town Hall. We also received and planted a Jubilee Oak on Causeway Green with help from children from the Primary School who have offered to keep it watered.

We are very proud of the network of **footpaths and bridleways** that enable residents and visitors to enjoy the surrounding countryside. The new path to the Blue Egg Shop and Post Office, not to mention the popular café, provides a safe and very pleasant route for walkers and cyclists. We have had problems in some areas with off-road vehicles using some of our green lanes and bridleways and causing extensive damage to these walkways so that they have been impassable by foot and horse over the winter. Damage was also caused to neighbouring arable fields. We are in discussions with Essex County Council as to how we can protect these lanes against misuse and damage.

We have also approached Essex County Council about the erratic **bus services**. These discussions followed several reports by local people and visitors about lack of clarity as to where buses stopped for different routes. Recently new bus stops have been installed by ECC and we are requesting clearer timetables. We will monitor these services and rely on your feedback. We have supported the weekly community bus service that now runs between the Salings and Saffron Walden via Great and Little Bardfield. We also continue to lobby for additional bus services, particularly to Dunmow and/or Thaxted.

In the last couple of months we have launched the process to refresh our **Parish Plan**. We held a well-attended open meeting in February where residents provided their initial comments on the village, what they liked, their concerns and their suggestions for improvement. This is the first step in consulting with local residents and will form the basis of the Parish Council strategy and plans for the next few years. A steering group is being set up with volunteers from the village so please let us know if you would like to help in any way.

Thanks to you all, as always, for your support tonight and during the year.

Carolynne Ruffle
Vice Chair, Great Bardfield Parish Council



Financial Report

For the year ended 31st March 2012

This is a brief report to highlight items of income and expenditure. Full accounts will of course be available to view when these are prepared for the annual audit.

Precept

In view of the general economic climate, and despite increasing costs, Members agreed to freeze the Precept to avoid any additional burden on the parish rate. Unfortunately, this may not be possible in subsequent years, especially if BDC withdraw the Parish Support Grant, which they have indicated will be likely. Electricity supply and maintenance has increased, along with other areas of expenditure, including the Council's insurance premium to £1758.05. Also, for the first time for many years, there was a poll at the May Election at a cost to the parish £460.69.

As always, every endeavour is made to obtain grants for the work of the Council, to ease the burden on the Precept. This is becoming more difficult since the recession as funding opportunities become harder to come by, however, although not as plentiful as last year, the following funding was achieved:

Grants / Donations / Fund Raising Achieved towards the Council's work:

- £400 from Essex County towards the Community Information Point
- £1,331 from BDC towards street cleaning/village handyman
- £2041.51 from the Photographic Competition and sale of cards and calendars for the Pavilion Project
- £7,500 from the Big Society towards the Pavilion Project
- £4,000 from the Community Initiative Fund which was split between the purchase of new play equipment following removal of a broken item and the completion of the new parish website – which won the EALC website of the year 2011/12

In addition to general on-going expenditure, maintenance and repairs, the following was approved:

- Donation to St Mary's Churchyard maintenance increased to £290
- Donation to Essex Air Ambulance of £100
- Quiet Space – continued maintenance to ensure this becomes a welcoming area when work is completed and launched at the Queen's Diamond Jubilee
- Refurbishment of Village Notice Boards and School Green bench

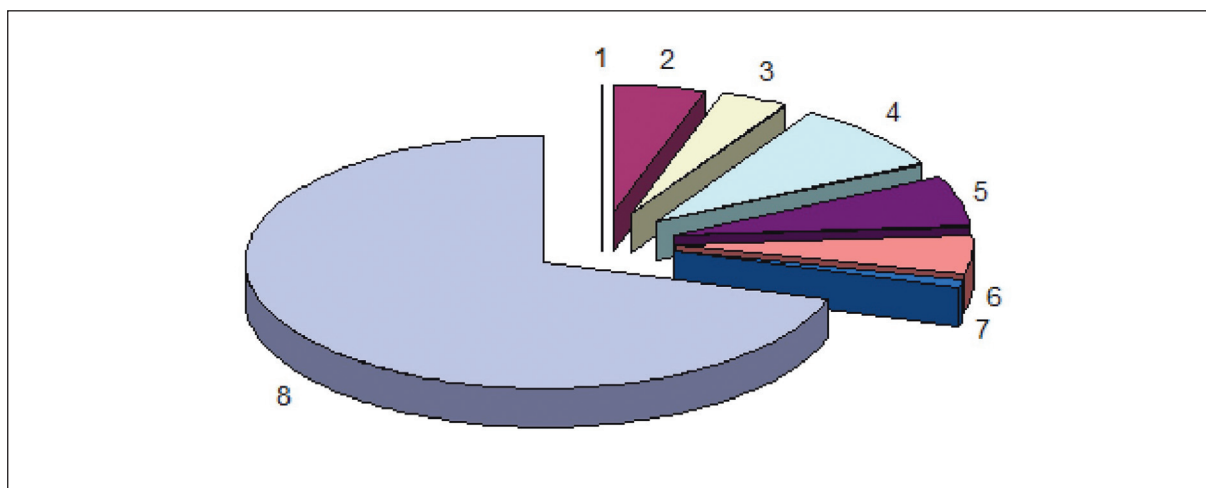
Kate Fox
Parish Clerk and Responsible Financial Officer



Great Bardfield Parish Council

Parish Income

For the Financial Year ended 31st March 2012



1	Bank interest	£16.00
2	Sundries and substation rental	£2,227.00
3	Pavilion/playingfield hire	£1,491.00
4	Grants	£4,000.00
5	VAT refund	£2,791.00
6	Verge cutting/village cleaning (agency arrangements)	£2,097.00
7	Community Information Point	£400.00
8	Precept + parish support grant	£30,849.00
	TOTAL	£43,871.00

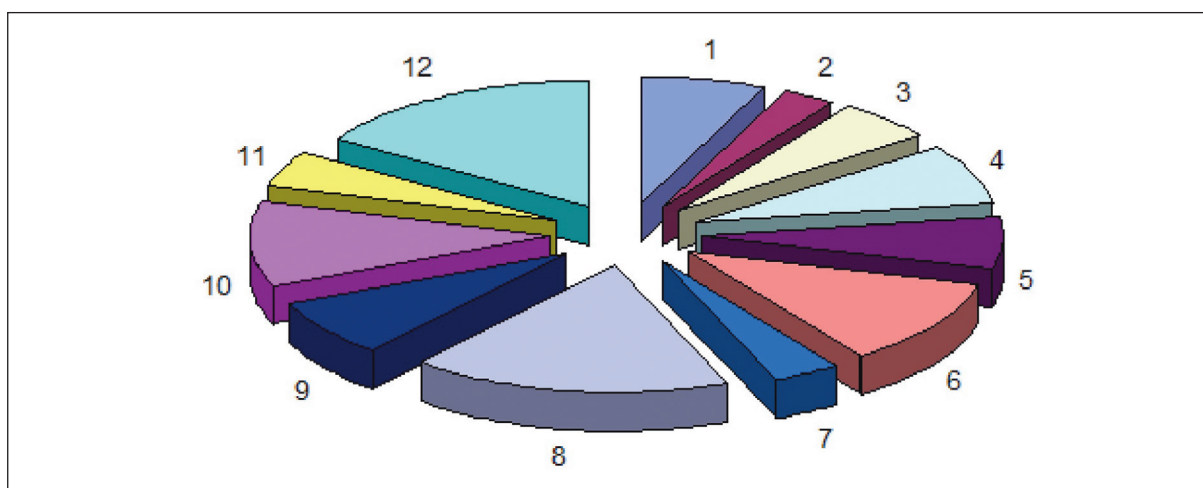
Pavilion Project Fund stands at*	£41,690.00
Reserves stand at	£26,000.00

*plus £7,500 Big Society award payable on completion of the first stage



Great Bardfield Parish Council

Parish Expenditure
For the Financial Year ended 31st March 2012



1	Public lighting – supply and maintenance	£2,588.00
2	Subscriptions and donations	£971.00
3	Town Hall: grant and substation rental	£2,106.00
4	CIP: Town Hall rent / IT and BT rental/staff	£2,898.00
5	VAT	£2,576.00
6	Grass cutting/Pipers/memorial/churchyard/open spaces	£4,273.00
7	Verge cutting/street cleaning (agency arrangements)	£1,338.00
8	Playingfield pavilion and Pavilion Project	£6,571.00
9	Capital schemes (play equipment)	£2,808.00
10	General admin/telephone/audit/sationery/sundries	£4,201.00
11	Insurance	£1,798.00
12	Salary/postage/copying/misc. office exp/sundries	£6,012.00
	TOTAL	£38,140.00



District Council

It has been another challenging year for your District Council; the funds still remain in Iceland and legal proceedings continue to recover the remaining moneys. The Council Tax precept has remained the same as last year, and reflects the hard work done by the Council's finance team, by the different departments and cabinet members in terms of controlling costs.

- Over £2 million savings have been achieved without hitting front-line services.
- We have increased community transport and we continue to support CAB and BDVSA while many councils have cut resources to the voluntary sector. We have continued the Parish Support Grant to parish and town councils.
- Keeping the District Clean and Green has been an important initiative, with its flagship 'Green Heart' project investing significant amounts of money in community and school environmental improvements projects. The 'Green Heart' is a good example of how with some financial help from the Council, communities can come together and achieve real outcomes for their area – we have provided over 900 trees to local communities.
- Recycling rates continue to improve, regularly clearing 56% every month. The Household recycling Centre in Shalford is now closed, and a brand new facility at Braintree's Springwood Drive is now fully operational, and much easier to use with ground level skip access meaning no more steps to climb!
- The balance between Rural and Urban interests continues to exercise many, and we know it is a live topic in many parishes. We very much hope that what replaces the Local Committee provides a strong mechanism to support those rural interests.
- The Council has established the Mi Community Fund of £500,000 over the next four years to support local community initiatives and Three Fields residents should approach BDC directly to obtain funding. This is intended to bypass the Local Councillors.
- Finally, and probably most useful, is the reduction in car parking charges to 10p after 3 pm, arising from an idea suggested by David.



Over the past year David has served on the Audit Committee as Deputy Chairman. John has continued his roles as member of the Standards Board and the Licensing Committee. We both continue to be busy with constituency work, much of it on an informal basis, as well as formal enquiries regarding planning, housing and waste collection.

Cllr David Reid

Cllr. John Finbow, Three Fields Ward



Essex County Council

Annual Parish Update Year End 2011/12

1. Budget

Setting the budget for 2011/12 was one of the most difficult that Essex County Council (ECC) has produced in decades. The financial situation for 2012/13 and beyond continues to be challenging.

At the Full Council meeting in February it was announced that Essex County Council would maintain the freeze on council tax for the second year running, while continuing to deliver value for money services. By February 2013 Essex residents will not have seen the county council's share of council tax increase for almost three years.

The budget announced this February has therefore been designed to not only deal with the pressures over the next 12 months but also to prepare Essex County Council for the challenging times ahead. The budget has been developed alongside a new five year corporate vision and corporate plan – a vision that places our economy at its heart and refocuses our priorities.

2. Priorities

The Council has set out an ambitious programme of work at the February Council meeting. Over the next five years, ECC's **key priorities** for Essex are:

- enabling every individual to achieve their ambitions by supporting a world-class education and skills offer in the county;
- securing the infrastructure and environment to enable businesses to grow;
- improving public health and wellbeing;
- protecting and safeguarding vulnerable people; and
- giving people a greater say and a greater role in building safer and stronger communities.

3. The last 12 Months

Over the last 12 months Essex County Council has done much to prepare for the budget while delivering improvements in key services:

- ECC has delivered £90M in savings and efficiencies in the current financial year and are on track to have saved £330M by 2013 - £30M over and above our target.
- ECC has improved its children's social care services. Whilst it is acknowledged that there is still a way to go to deliver an excellent service, the commitment and hard work of our staff and of our partners - have improved services to our most vulnerable children.
- Adult social services continue to be one of the best in the country.
- ECC has continued to support apprenticeships in Essex through our innovative and highly



respected apprenticeship programme, creating over 1,380 apprenticeships (including 150 directly within ECC and more with our public sector partners) and the number of apprenticeships in Essex is now over 80% higher than before the council launched its scheme – evidence that we have made a real difference to the life chances of our young people and created new opportunities for them to gain vital workplace skills.

- ECC has worked with the district and borough councils to increase recycling rates across Essex to over 53%.

- ECC has secured – through our membership of the South East Local Enterprise Partnership – an enterprise zone in Harlow with the opportunity to create 5,000 new jobs in the key sectors of Medical Technology, ICT and Advanced Manufacturing.

- ECC has completed – on time and on budget – the Olympic mountain biking venue at Hadleigh and hosted a successful test event. Essex is now ready and proud to be an Olympic host county in 2012.

- The new A12 Junction 28 in North Colchester was opened over three months ahead of schedule.

- ECC has completed and opened the Roscommon Way Extension on to Canvey Island providing direct access to the Charfleets Industrial Estate, helping to tackle congestion and supporting regeneration and jobs growth in the area.

- Whole Place Community Budget. Essex has been chosen as one of only four areas in England to pilot a radical and innovative new model of public service and work is currently underway on the implementation of the new Community Budgets initiative. The Community Budget is a flagship initiative of the Coalition Government and will see public sector partners across local government, the NHS, the emergency services and various national government agencies coming together to redesign services around the needs of local communities.

Proposals for a Whole Essex Community Budget will help refocus the way local and national partners make use of some of the annual £10 billion-plus of public sector spend. Over the next eight months, the specific detail of the Community Budget will be developed through research, analysis and consultation. The types of projects that could be considered include:

- Simplifying processes for older people using the health and social care system
- Reshaping local skills provision for young people – ensuring they gain the right skills, making it easier for employers to recruit and for young people to find work
- Joining up services to reduce the costs of dealing with problem families.

4. Support for the Essex economy and the most vulnerable people

The 2012/13 budget will invest in infrastructure to support the Essex economy to grow as well as continuing to prioritise services to vulnerable people and includes:

- A new £20M Rolling Investment Fund in our capital programme over five years to finance projects that unlock economic growth as part of our Integrated County Strategy (ICS). District and borough councils and the private sector will be able to invest in to this pot if they wish to in order to jointly fund projects in their area. Returns on investments will be reinvested back into the Fund to finance further projects and the Fund will increasingly become a major player in the drive for economic growth in the County.



- ECC has also secured through our Local Enterprise Partnership (LEP) a share of £33M from the Government's Growing Places Fund to support projects that unlock economic growth. This funding will support projects that have been identified in the ICS.
- ECC has announced £5M to help roll-out superfast broadband across Essex. With match-funding by the Government's Broadband UK fund and the private sector, this will deliver a total investment of over £20M to provide a real boost to the connectivity of local businesses and residents.
- A new partnership has been formed with *Ringway Jacobs Limited* to create the largest integrated highways partnership in the UK delivering significant savings over the next 10 years, while ensuring that available funding is used more effectively on our highways network. It will also make it easier for residents to track progress on pothole repairs.
- Fees paid to foster carers have increased and the package of support available has been improved to enable more Essex children to be placed with carers within the county.
- ECC is reviewing contracts with suppliers of adult social care to ensure the council is paying a fair price for care services that are competitive and delivering best value to the customer.
- The new budget again gives assurances that not one of ECC's valued 73 libraries will close. While there are budget pressures in the Library service the objective is to mitigate these by securing income from bidding to run services at other authorities, such as the existing contract we have with Slough
- ECC will be the first local authority in the country to raise funds through a new innovative Social Impact Bond to finance intensive family and community based work with young people on the edge of care or custody. The council will only pay for success, keeping families together, preventing care or custody and improving young people's life chances while saving money and ECC has successfully attracted some support from central government.
- As it is not just the young and old who may be vulnerable ECC has announced that £100,000 will be made available through credit unions across Essex targeted at some of our most financially vulnerable residents to promote financial inclusion.

5. Savings and efficiencies

Difficult decisions had to be made and in total the new budget includes £123M of savings and efficiencies, though some £67M of these were announced 12 months ago. These savings and efficiencies include:

- ECC is reducing the subsidies that are paid to commercial local bus operators, which has amounted to around £8M per annum in recent years and can no longer be sustained. Members and residents will be consulted on this as it is recognised that this could have implications for the viability or frequency of some services in some areas.
- From 31st March 2012 ECC will no longer be sharing a Chief Executive with Brentwood



Borough Council and to reflect her changing role and the challenging financial situation, Joanna Killian has volunteered to further reduce her salary by £15,000 effective from April 2012 in addition to the five per cent reduction she took in 2011–2012.

6. Other initiatives

At the Full Council meeting in February, it was announced that a sum of money would be devolved to local highways panels for local prioritisation of work in the following areas:

- Traffic Management Improvements
- Tackling Congestion
- Safer Roads (including Casualty Reduction)
- Public Rights of Way Improvement
- Cycling Programme
- Passenger Transport Improvement Programme
- Minor Improvements Schemes

The amount allocated to each district/borough area will have a floor of £400,000 and a ceiling of £1 million. All local County Members, and district or borough members where they wish to be involved, will be able to prioritise and make recommendations to the Cabinet Member for projects or schemes within the allotted budget.

The process to build a waste plant has begun with the award of a contract to Urbaser Balfour Beatty. They will be building a MBT plant at Basildon that will treat the Counties residual waste by reducing it in volume and turning it into a semi inert solid substance that can go to landfill until such time as a market can be found for it. Residual waste from the District Councils will be bulked up at a series of six transfer stations across the County from where it will be taken in bulk to the new plant. When the plant opens in 2015 it will be processing it will process over 360,000 tons of residual waste.

Essex County Council Trading Standards has continued to play a major part in supporting business in Essex and protecting residents from exploitation. Not only have they brought several major prosecutions against individuals trying to exploit the public by doing such things as clocking cars they have successfully pursued the perpetrators under the Proceeds of Crime Act to recover what assets they have for the public good. In these hard times Trading Standards are worried about an increase in doorstep crime which is the worst form of crime as generally the perpetrators prey on the vulnerable and old sometimes getting many thousand of pounds from people for shoddy or non existent work.

7. Recognition for ECC Councillors

Cllr Peter Martin, Leader of ECC was awarded an MBE in the New Year's Honours for services to Local Government. Cllr David Finch, ECC Deputy Leader and Cabinet Member for Finance and Transformation, was recently awarded the 'Outstanding Contribution to Finance Performance' award at the Local Government Information Unit (LGiU) Councillor Achievement Awards 2012.



Roger Walters
Member for Great Notley and Three Fields





Great Bardfield Charities

The Charities Committee is accountable to the Great Bardfield Parish Council, and the administering Officers for the Year 2011 – 2012 remain as follows:

Pat Coles – Chair Nominative Trustee	Tony Hayward – Treasurer Nominative Trustee
Brenda Poston – Secretary Co-optative Trustee	Debbie Rogers Co-optative Trustee
Alan Bray – Ex Officio Advisory Trustee	

The Trustees were pleased that Debbie Rogers accepted re co-option at the December 2011 meeting.

Alongside the quarterly meetings, the Trustees held an extraordinary meeting in February 2012, with the chair, vice chair and treasurer of the Great Bardfield Historical Society. The Charity Accounts are audited yearly by Bill Mules, and we thank him for his on-going professional support.

The Charity Expenditures over the Year April 2011 – March 2012 are outlined as follows:

Total Income including interest: **£18,070.00**

Twenty-one varied applications from individuals and organisations within the village were considered and grants made to the value of **£8,980.00**

Winter fuel applications increased this year and payments of **£11,600.00** were made between December 2011 and March 2012.

Total Expenditure **£20,580.00**

During the year our Capital funds value has decreased by 5.75%. Bank interest has been minimal.

NB – These figures may be at a variance with the audited figures which will be available at the end of June 2012.

All applications to the Charity are considered carefully and without prejudice by the Trustees. Organisations or individual villagers can approach any of the Trustees at any time with requests for assistance in making applications. Dates of the Charity Meetings are recorded in the Bardfield Times as a reminder to those who may wish to make an application. Full details of The Great Bardfield Charities can also be found on the village website

This report, together with the audited accounts are deposited with the Clerk to the Parish Council.

Pat Coles – Chair of the Bardfield Charities



Great Bardfield Town Hall

After a few years of declining bookings, this year has shown a significant increase in casual bookings and two new regular groups are starting up, both in the health and fitness category.

The boiler broke down at the end of February but a new one is now up and running. This is a big expense, exacerbated by 20% VAT that apparently we are unable to claim back, unless billed through the parish council, a slightly complicated arrangement but one that should be considered. On the upside the new boiler should be a bit more economical to run.

We have managed to decorate the exterior of the CIP and the Cottage Rooms this year. Quite a lot of the window frames were rotten, with some needing replacement, while others will be repaired next time.

In early April we will have the hall floor stripped and resealed. This is a five-day job and will cause more disruption to the hall users but will benefit everybody in the longer term.

Fund raising activities over the year have been the usual mix. A quiz evening, Christmas draw and Carols evening, Boules tournament, a Murder Mystery play, our 200 Club, and the Art and Craft show. All these events require organisation and much catering. Many thanks must go to the dedicated committee members and their families and friends who also help to make these events successful.

As ever we are grateful for the grant and rent from the parish council. This also helps our funds and with our own efforts we should be able to keep the Town Hall charges fixed for yet another year.

Jim Bray, Chairman, Town Hall Committee

The Bardfield Players

The Players, which were reformed in 1991, continue to go from strength to strength. I have been Chairman since 2001 and it is our general policy to put on a variety of plays for both the public and ourselves to enjoy and during this past year we have kept to that. *It Could Be Anyone of Us* – a slightly odd murder mystery about a dysfunctional family of would-be artists – last May, and *Theft* – an investigation into personal relationships sparked off by a burglary – in November 2011 both attracted large audiences of over three hundred. As a consequence of staging not just these two popular plays but the many other productions we have done over the years, the group's financial position is healthy.

We have managed to attract several new members over the last year or two, and currently have about ten actors, two technicians and three builders, several people who perform roles back stage and who turn up for rehearsals on a regular basis, as well as numerous good people who come and help run the bar and front of house etc when there is a performance.

Our next production will, as usual, be in the Town Hall on the 16th – 19th May 2012 and is called *Trivial Pursuits*.

Ian Ruffle, Chairman, Bardfield Players



The Bardfield Times

The BT team works very hard to continue to keep the magazine running and delivered free of charge. This is proving to be increasingly difficult as printing costs increase but we hope that this year we won't have to increase the annual costs to advertise in the publication. We continue to introduce varied items for our readers to enjoy. Two new features, both well received by our readers, have been initiated: *Village People*, a monthly series of interviews with local characters by Joyce Yates; and *Village Places*, an occasional series recently initiated by Janet Dyson. Joyce's article and obituary on June Long received a particularly positive response from villagers and seems exactly what a magazine like ours should be doing.

David Yates has been pleased to join the team as joint editor, responsible in the main for proof-reading copy and commissioning new material. The success of the magazine is down to the five team members who take time out of their busy lives to put the publication together, organise the advertising, keep a tight rein on the finances and finally to the 18 volunteers who deliver over 700 copies to every household around Great Bardfield, Little Bardfield and Hawkspur Green, ten months of the year, come rain or shine. Fundraising events are also organised by the BT team to meet the costs of producing the magazine. The **Bardfield Cinema Club** is gathering momentum and we are hoping to extend the season by showing films in the summer months. The **Open Gardens Day** held last summer was great a success however we are not planning to repeat this event this year but hope to again in subsequent years.

Statement of Account – Year Ending 31 st March 2012		
	2011 - 2012	2010 - 2011
Opening balance	£1,896.34	£605.15
Income		
Advertising	4,869.00	5,961.00
Subs/sales	195.96	239.40
Donations	5.00	4,800.00
Fundraising	-	1,425.77
Open Gardens	1,060.00	-
Cinema	1,302.68	-
	£9,328.98	£13,031.32
Expenditure		
Stationery	60.95	6.98
Printing	7,460.00	6,660.00
Postage	90.62	63.77
Cinema	1,120.41	4,329.54
Donations	-	-
Other	168.18	74.69
	£8,900.16	£11,134.98
Closing Balance	£428.82	£1,896.34
Current account: £1,026.64		
Cash in hand: £80.35		

Liz Craig, Joint Editor

Jackie Newton, Hon Treasurer



Bardfield Allotment Group

Another great second year on the allotments plots, and abundance of vegetables with many different approaches to gardening but with the same results.

In April I met with a lady from the Rural Community Council of Essex (RCCE) who like to support rural communities who are setting up orchards, allotments etc. Kate Fox our Parish Clerk had recommended the meeting to see if we needed help with anything else. We had to put forward a “wish list” for the Committee which fortunately was not very long as we had already purchased the shed, fence etc. Luckily, we were able to get help from them with all that we required. A water meter, (as the tap in the meadow is connected to the pub which is privately owned, and this seemed the fairest way), two wooden compost bins and a strimmer. In return if they have anything they want me to promote I put this in our communal shed for everyone to see!

We now have an informal newsletter when there is something to arrange, or any news, displayed in our shed, and I am delighted to say all of the plots are still taken by the original holders, dug and ready to go for the new season!

Tansey Bolsom



Bardfield Oxlip Recovery Programme

In 2010 management and administration of Bardfield Oxlip recovery programme passed from the hands of the Essex Biodiversity Group and the Essex Wildlife Trust into the hands of local interest groups (namely the Bardfield Parish Council for 'Piper's Meadow' and Mr Alan Jordan for 'The Ash Ground'). Despite a second spring and summer of drought, the Oxlips continued to prosper reasonably well particularly in the wetter areas at the two sites.

Plants growing alongside the banks of the spring leading to Pod's Brook (The Ash Ground) have grown and established very successfully and their long-term sustainability looks promising despite the damage from deer during the flowering period: a situation which will need addressing



Oxlips growing in profusion at Great Lodge

very soon if the population is to expand of its own accord. Small-scale plantings have continued elsewhere on this site, both to test out promising new habitats and to reinforce the existing populations. However, plants within the deer-proof enclosure have suffered badly during the recent periods of drought and those plants remaining may have to be moved to more favourable parts of the field at the end of the season.

Planting of Oxlips in Piper's Meadow has continued to be a popular activity for the local schoolchildren and further plantings were made in 2011 courtesy of the Essex Biodiversity staff. It is still a little too early to forecast the long-term permanence of the transplanted Oxlips but those plants which have established well are continuing to compete with the grassland vegetation despite the somewhat dry conditions.

A routine mowing regime has been established, under administration from the Parish Council, to help control excessive herbage and to enable visitors to visit the site in relative comfort. The meadow receives two full cuts during the year: the first a "topping" in early March to allow the Oxlips to break through and flower above the canopy, followed by a main "hay cut" during August at which time the grass is removed in order to help reduce soil fertility. Throughout the year a figure-of-eight mown pathway is also maintained by the contractors, which allows access to the site even during the summer when the herbage is quite tall. Aside from the Oxlips, the site has proven to be a sanctuary for all kinds of wildlife other than the



wild flowers. Insects and particularly the butterflies have benefited from delaying the “hay cut” to as late a date as possible during the season. Unlike the Oxlips they have enjoyed the hotter and drier summer weather. The mown path allows access at all times of the year, and I can recommend a summer outing to any butterfly enthusiasts in the community.

Plantings at Long Green



The beautiful English Bluebell

Work to improve the appearance of the general habitat of Long Green (Coney Green) was started in the spring of 2010 with a planting of over 100 bare-rooted native trees and shrubs/bushes. From that time up until the present, however, the weather has favoured neither plant establishment nor growth. In fact over the past two seasons conditions during the late spring and summer have been so dry that all plantings have received a routine hand-watering on a weekly basis for a period of several weeks during the summer: a rather arduous task requiring approximately 500 litres of water per week. The good news is that so far we have lost none of the specimen trees and only a small percentage of the sapling bushes. Current weather patterns suggest that 2012 may be yet another dry year and further watering may again be necessary.

On a more positive note, the vandalism initially experienced from off-road vehicles has not been repeated, although a good deal of litter still appears to

“invade” the site. The lane is a public byway and frequently used, particularly at weekends, by motor-cyclists and the like, and such visitors are not always willing to take their rubbish home with them ... a problem but not a disaster. In addition to the planting of the tree and shrubs, some small-scale test-plantings of perennial herbs were attempted both at this site and at another in a small oak grove to the southern end of the byway.

At the main site, seed of locally-sourced Cowslip (*Primula veris*) was sown on the bare ground around the base of the newly-planted woody subjects. I am pleased to report that germination was satisfactory (helped by the artificial watering) and plants are just coming into flower for the first time this spring (2012). Further seed-sowing along the lane is now planned for later on during the season.

At the second site (the oak grove) both seed and plants of the Bardfield Oxlip (*Primula elatior*) and the English Bluebell (*Hyacinthoides non-scripta*) were planted/sown in small test areas. Thus far the Oxlips have survived but not prospered due to the dry weather. The bluebells, on the other hand, would appear to be doing much better. Seedlings have survived in number from both the 2010 and 2011 sowings, although it will be a year or two yet before we can expect to see flowers. In the meantime further seed will be collected and sown in other places along the lane.

D.W. Joyce



Bardfield Horticultural Society

The Bardfield Horticultural Society has enjoyed a busy and successful 2011, but with some ups and downs along the way. Regrettably, Terry Smith, the Society's Show Secretary for over thirty years passed away in February and will be sadly missed.

The year began with a guest speaker Jackie Aviolet, an enthusiastic albeit rather enigmatic personality who spoke on the topic of "I am a Tulip: What are you?" Her talk was based on relating peoples' names to the names of selected garden plants and vegetables. She undertook to associate each member of the audience with their particular "plant-name double" with great panache: also explaining that she was planning an enterprise to arrange her own 20 acre garden site along similar lines as a means to captivate and entertain visitors.

Despite the unusually cold winter followed by a dry spring, the annual Spring Show was well supported and a riot of colour from bulbs, flowers and early-flowering shrubs. In the domestic section, entries were up on the previous year, perhaps encouraged by the printing of the recipes in the Bardfield Times. And as usual the children from the Bardfield School put on an impressive display of hand-coloured pictures and Easter novelties.

The Spring Supper followed soon after the show and once again was well-supported by the village community. As the supper is primarily organized by volunteers, who are responsible for much of the cooking and catering, the event has become a real social occasion.

The garden outing in June to Snares Hill Cottage, Stebbing, proved to be a most enjoyable and popular event. The owners, Pete and Liz Stabler, have created a most exciting cottage garden, which they open three times a year on behalf of the National Garden Scheme and to private parties as well. The garden boasts a plethora of habitats, planting styles and garden ornaments, as well as a stunning natural swimming pool. Although the variable weather during 2011 set a real challenge to the members exhibiting in the Summer Show, entrants were still able to deliver a fine selection of excellent vegetables and flowers. These were tastefully displayed against a backdrop of artwork, handicrafts and gastronomic delights. At this show we experimented with and embraced the challenges of computer-aided result-summaries.

The final events of the year, the Harvest Supper and the AGM, took place at the beginning and end of October, respectively. This year entertainment accompanied the traditional harvest meal, courtesy of Catherine Terry and her Song-time Cabaret. Catherine performed songs from popular shows and musicals, interspersed with amusing incidents experienced during her professional career. Where else can you get good company, great food with a mountain of sweets, a glass of wine, and first-class entertainment, all for less than a few packets of seeds?.



Harvest festival flowers at St Mary's

Lynne Joyce



Great Bardfield Primary School



Year 4/5 experience their very own 'Royal' wedding with Rev'd Beaken officiating, followed by a royal celebration banquet at school

A school never stands still – and as so many things happen over a year, I hope I can give a snapshot of school life since April 2011.

Not long after we returned from the Easter holiday, we celebrated the Royal wedding with our very own ceremony in the Church. Our Year 4/5 children became wedding planners, liaising with the catering staff for the wedding breakfast, ordering the cake as well as deciding on decorations, invitations, music, and flowers. We were very grateful to Rev'd Beaken for officiating at the ceremony.

The restoration of our swimming pool began to take place in May at a cost of £15,000. This was a joint funding venture with the PTA who had agreed to pay £7,000. We are very grateful to our parents and the Great Bardfield community for attending the various functions in order that the PTA can raise the necessary funds.

Our children so enjoyed their swimming lessons and water sport activities. We were also able to offer swimming lessons to a class at Finchingfield School. During the first week of the holiday, the pool was open for Cartwright's Swim School and multi-sport activity sessions.

We have a variety of talented children at the school and we are always so proud of what they achieve both in school and out of school. We share successes at our Celebration Assembly each Friday when there is also an open invitation to parents to also join us. At Christmas, the whole



school took part in productions with our youngest children performing Jesus' Christmas Party and The older children performing 'Gold' the story of King Midas.

We were very proud of our team of 42 athletes who took part in the Uttlesford Schools Partnership Track and Field event at Helena Romanes in the medium size schools section, our boys came 1st. Year 6 children took part in their Challenge week on Hayling Island, they took part in such activities as archery, abseiling, and climbing. We thank the Bardfield Charities for supporting those families who are unable to meet the full costs.

As part of the Year 6's life skills work, they all passed their St John's Ambulance First aid badge as well as their Bikeability cycling safety certificate. Our Senior School Council have also attended a Parish Council Meeting where they shared the views of the children with the Councillors. The children have been involved in a number of fund raising charity events. Over 160 Smile Boxes were presented to George Mills for his work in Chernigov. Over £170 was raised on Children in Need Day and more than £280 was raised for Sport Relief when parents and children walked the extra mile!

We were pleased with our end Year 6 SATS results, however we continually strive to improve on them each year. We have concentrated on improving our writing the year, using Pie Corbett's methods and training as a basis for moving forward.

	School	Essex	National
KS2 Eng L4+	88%	81%	82%
Reading L4+	92%	84%	84%
Writing L4+	76%	74%	75%
KS2 Maths L4+	88%	80%	80%
KS2 Maths L5	36%	35%	35%

Our numbers have decreased over the last few years, like many small schools in the area, and reluctantly we had to make the decision to move from six classes to five with mixed ages in all our classes for our 2011/2012 academic year.

There have been a number of staff changes over the year. Mrs R Loader went on maternity leave in June and Ms V Gardner left to take up a teaching post in Bocking in July. Mr Curzon left at Christmas to become Deputy Head at a school in Stansted. Mrs T Martin LSA took up a post in Takely School. Mrs Burt became Office Manager in a larger school.

We were pleased to welcome Mrs Pennick who teaches the Year 1 class, Ms H Berkeley as our new Office Manager and Ms T Melhuish as our new school cook. Our school dinners are delicious and we have practically doubled the numbers of children who are taking up the hot dinners with fresh product sourced locally. Parents regularly join their children for lunch.

On behalf of the staff and children at the school, we would like to thank the local community for their continual support.

Anne Barney, Head Teacher



Great Bardfield Primary School PTA

Great Bardfield Primary School PTA is an integral part of the school community and with the help of both the school and the parents raises thousands of pounds, which goes towards ITC equipment such as laptops and cameras, reading resources to enhance our children's education experience and the school's facilities. We help with funding school trips and our main project last year, which is still ongoing, is raising £7,000 towards the new swimming pool.

The PTA is much more than simply fundraising; the PTA exists to provide closer links between home and school and it is an excellent way to bring staff, parents and friends together socially in support of the school, working together towards a common goal. It gives you an opportunity to meet parents at the school and it is fun too.

Over the last year we have held many PTA events from the Christmas Winter Wonderland to the main one being the Summer Fete, which we will be holding again this year on Saturday 16th June. As ever, we hope our Fete will be a great success, one which the whole village will enjoy. This is only made possible by all the people that help and support us, so I would like to take the opportunity to thank you in advance.

We recently organised a very successful St. Patrick's Family Quiz Night held in the school hall. Thank you to the school's new catering manager Teresa who catered for the event and gave many of the parents an opportunity to taste her wonderful food. We also devised an Easter Egg Hunt around the village on Saturday 7th April and we are hoping to hold another bingo night very soon.

Not all our events are run as fundraisers; for example there are the children's discos and the "shop 'til you drop" Christmas Market. These and other such events are run with the aim of giving the children a good time and as a way of thanking families for their continued support for the PTA.



Chair, Dick Beanland
Vice Chair, Lucy Blackwell
Treasurer, Sam Winter
Secretary, Joe Jones

The annual festive Horse Parade through the village which marks the start of the PTA's Christmas fun day



Bardfield Carpet Bowls Club

After the successes of the 2010-2011 winter season we have not quite reached the same dizzy heights. The County restructured its leagues, so in our area division one and division two merged to form one larger league. So finishing mid-table was, I suppose, a reasonable result.

We again attended various Charity events and all of the Essex County competitions which are held at Braintree. All the individuals who represented our club did us proud. The best individual performance was by our club captain who, for the third year running, was a losing semi-finalist in the Essex Singles competition



Our club has been in existence for very many years now and there are a few of us that have lasted all that time, however like many other clubs around, we do not seem to be able to attract new blood. There have been instances during the last year when, due to unforeseen circumstances like Lynda breaking her bowling arm, we have had trouble fulfilling our commitments. We just need a few more members to bolster our numbers and rejuvenate our club.

Is there anyone new to the area that would like to try your hand? We would really welcome some new faces into the club so if you think it might be worth a look; please do not be shy in coming forward. The Club meets on a Wednesday at the Town Hall from about 7:45 pm.

I would like to dispel a couple of myths which might prevent you from thinking of joining our Club. Firstly bowls is not a sport for old fuddy duddies, just look at the competitors in the world bowls championships you see on TV, it is a sport for all. Secondly, despite the name 'carpet' it is not the toy game that you play in your lounge. The bowls are 10cm (4 inches) in diameter and the carpet is 10 metres by 2 metres. Carpet Bowls is a proper skilful sport open to all, the young and not so young, the able and less able bodied, we even let male and female compete together. Finally; it is cheap as the club provides the bowls etc; it prides itself on its friendly nature and is as competitive as you wish to make it. If you would like more information about carpet bowls call me, Cliff, or Lynda on 810782.

Unfortunately Bardfield does not have an outdoor lawn bowls green now but there are many clubs around that would welcome any interest you may have in the full size game. There are clubs at Dunmow, Thaxted, and Stebbing to mention just a few. Lynda and I play at Quendon. The outdoor season is now upon us so if you are new to the area and would like contact details we should be able to help you out here too.

Clifford Richardson
01371 810782



Freshwell Health Centre

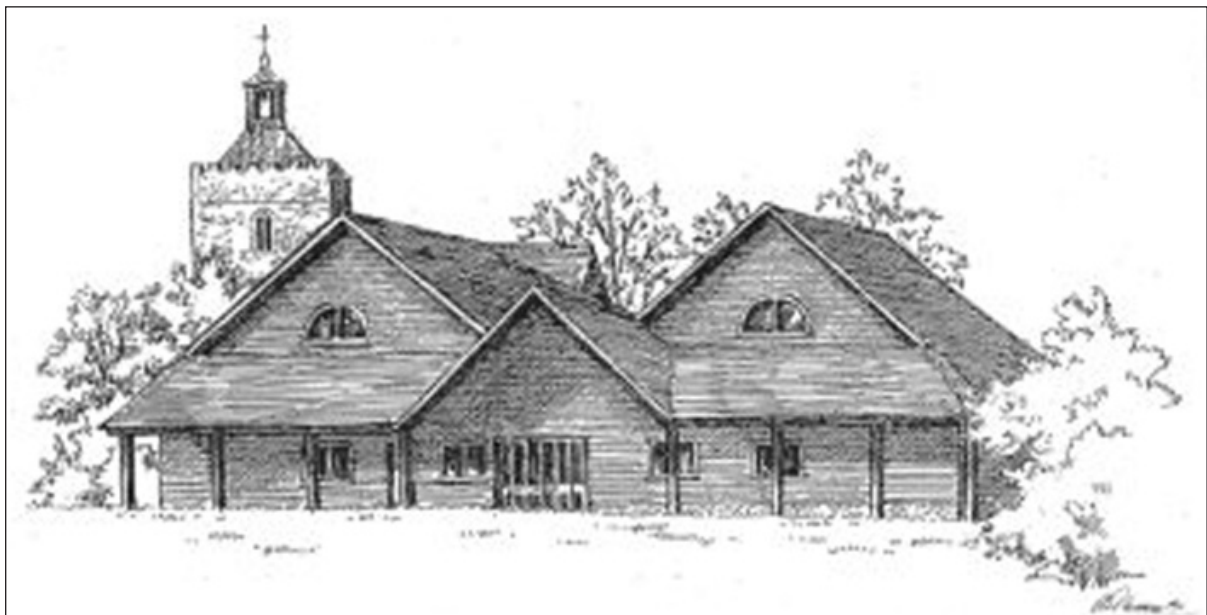
In these challenging times the Freshwell Health Centre team continue to strive to provide high quality, timely, local care for its patients. For this reason we do as much as we can in-house and are pleased to announce that a new cardiology service has just started here. We continue to welcome other providers of health and social care to use our facilities including Citizens Advice, the Pain Team from Broomfield, The Village Agents, The Hospice Outreach Project (HOP), Dieticians, Health Visitors and Midwives. No wonder the car park is sometimes full!

Those of you who have visited the surgery recently will be aware that we recently suffered a flood in the waiting room. We are told that the room has nearly dried out and we are keen to press on with the repairs as soon as possible. Thank you for bearing with us and for putting up with the rather shabby conditions in the room at present.

Thanks to the CREAMER Fund and their tireless fundraising efforts, we have made several improvements to our facilities in the last year. Our main purchases have been the refitting of a treatment room and a state of the art micro-suction machine. We have also been displaying original paintings for sale in the corridor. These have been donated to CREAMER by a local artist who wishes to remain anonymous. They have been a wonderful source of income and much admired by patients and staff. There are a few remaining should anyone be in need of an original present.

We are delighted to announce that Dr Evans had a beautiful baby boy in September of last year and she will be coming back at the beginning of April. She is returning for three days a week and Dr Walker, who has been covering her maternity leave, has kindly agreed to stay on with us for one day a week. If you have met him, I am sure you will agree he is a great asset to our team.

The eagle-eyed amongst you may have spotted that we now have new junior assistants in the dispensary. This is because our two previous juniors, Eliza and Ben both started at medical school in October. I am sure you will join us in wishing them well on their journey to





becoming part of the next generation of doctors. Another of our staff, Pat, should also be congratulated this year as she raised a great deal of money for Great Ormond Street Hospital by trekking along part of the Great Wall of China.

We were delighted to see Freshwell ranked very highly again in the results of the National Patient Satisfaction Survey. To those patients who contributed, thank you for your kind comments.

We had the opportunity of designing our own Patient Satisfaction Survey this year – for this we owe many thanks to our Patient Reference Group (PRG). This group of volunteer patients have given us their priorities for questions and helped plan our changes following the results. A report of their involvement and the results of the survey are available to view on our website www.freshwell.co.uk. If you would like to become part of this group, please ask at reception or fill in the online application form.

Finally, this year saw the reinstatement of our evening educational meetings. These were something we started about 10 years ago and the one we held in the autumn on the topic of heart disease was very popular. We had planned to hold another in the spring but this will have to wait until the waiting room is more serviceable. Do let us know if there is anything that you think would be a useful topic for the community to learn more about.

As always, we welcome your ideas and feedback, either by phone (01371 810328), post or in person.

Linda Cutts, Practice Manager

The CREAMER Fund

This has been a fantastic year for the CREAMER Fund.

We have received our largest donation ever. Mr George Tubbs gave a huge amount of money to the surgery in gratitude for the care he had received in his later years from all the staff. We are happy to make sure this money helps as many people as possible in his memory.

Iris Jealous has continued to raise a considerable amount of money from her efforts. Sylvia Gould, as Fundraising Co-ordinator, has come up with some new ways of raising money. Kay Painter has worked very hard on the accounts.

Pippa Manby gives us the 'at the coal face' information and the doctors provide the medical input and an overview with Anita Clapson making it all happen.

Also this year we were involved in dedicating 'Betty's Room'. Anita Clapson and Linda Cutts organised an excellent Open Evening for the surgery and all present were very complimentary about the CREAMER Fund.

A memorable year.

Christopher Blewett, Chairman



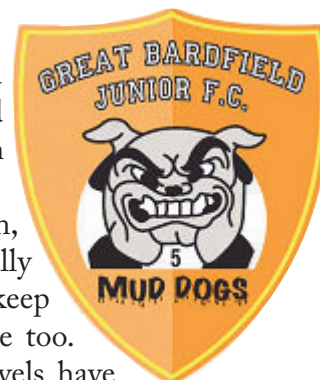
Great Bardfield FC

'The Muddogs' 2011 - 2012 Season

With seven league teams, this season has seen a lot of football played in and around Great Bardfield. The dedicated few managers and coaches really make the club tick, and recognition has to go to them all for making the difference.

As always, new helpers are needed and as we plan for next season, this is as evident as ever. The men's team started this year successfully and we hope their experiences this year will lead them to want to keep the team together over the summer and enter next season's league too. New faces at the under 8 age at both management and player levels have created a new and lively energy at the youngest end of the club.

We welcome also our new secretary, Maya West, for taking on this central role at the club. At the end of the day, our club is all about playing football whether training or the match. Our intention remains that from when the whistle blows to kick off, through to the final whistle, that in that period of 40 to 90 minutes (age dependent), the kids of our great village and many from the surrounding area feel and know that they are all great footballers.



Under 8s



On 10th September 2011 the newly formed Great Bardfield FC Under 8s kicked off their season with a home fixture against Shelford and Stapleford Strikers. Without sufficient time to train and organise the players over the summer we suffered a heavy defeat. It was clear that we would be up against it this season as we would be playing some very well drilled and organised teams who had been playing together for at least a season. We, however, had a group of incredibly keen and excitable youngsters, some of which had never played in a real match and it was quite clear that we had some work to do!

We used the following training sessions to experiment with formations and to see who was best for each position. In training the kids listened well and trained really hard and the improvement in some individuals has been amazing.

We got our first goal away at Plantation Youth and the smile on the scorers face, Jacob Leonard, is an image that will stay with me for a long time. Over the season the team has kept



on improving and the results have been getting better and although we're still looking for that first illusive victory, the kids cannot be faulted for their commitment and enthusiasm.

Under 11s

The season for the U11s kicked off well with a first match win away vs Over Sports. We also beat the same team in the Cup but unfortunately lost to a strong Haverhill side in the next round. Despite difficulties getting a full team together every week, the U11 Muddogs did the club proud with two more wins before the Christmas break. The most memorable game, though, before Christmas was when we went away to Newmarket with only 8 players in the 9 v 9 format. The boys battled hard and even scored but the fresh legs of Newmarket's subs got the better of us in the end. I was very proud of the team that day as they never gave up and we all enjoyed a 'sweet-fest' after the match. The other team looked a bit disgruntled that they didn't have any sweets!

After Christmas we went away to Fulbourn who'd beaten us at home earlier in the season. What a game! We went up 2 – 0 then they came back to lead 3 – 2. We had an exciting second half with our team passing like never before, and we won 4 – 3.

We lost our number one goalie in February and since then we've had to use substitute goalies which is not ideal but as we come towards the end of the season I'm sure we've got some more wins in the pipeline. This has been my first season as manager of the U11s and I've enjoyed watching the lads improve over the season. They're beginning to pass the ball and move a lot more and this will pay dividends in the long term. Thanks to Paul Major who has been a great help with co-managing and coaching. Thanks also to Liz and Howard Marshall – Howard for always taking on the linesman role and Liz, along with Debbie Nicholson, for their unwavering support and occasional coffee-making.

Under 12s

The team entered their fifth year with two new additions to the squad. Both settled in well and showed how the Muddog ethos of inclusiveness brings out the best in the team. The team has gone on to perform well in their first competitive league, entering the 1st Division and acquitting themselves well against some very good teams from across the Cambridgeshire district. The highs were draws against teams which in previous years had been streets ahead of them, however the main thrill remains to watch a group of boys who came together at the age of seven still turn up each week with the same enthusiasm and enjoyment.

Under 14s

The Under 14s have benefited from a fantastic new, full size pitch on which to play their league





games this season. The pitch has maintained a lush playing surface throughout the year which has helped the U14s become champions of their Cambridgeshire league. The season has been amazing with the team only losing one league game and winning the rest! The success has also been on an individual basis with one of our strikers, Josh Fairhurst, topping the goal scoring charts for our league. The pitch, atmosphere, surroundings and local togetherness have all come together for the benefit of the team.

So with a stunning season for the under 14s, building on the performances of last season where they only failed promotion by one point, the lads took the division apart by winning 18 of their 19 games to date. In the process of this scoring 93 league goals and conceding only 16 goals.

Leading goal scorers

Josh Fairhurst:	42 goals to date
Rory Mercer:	20 goals to date
Sam Major:	10 goals to date

All the squad have played their part in this successful season and hopefully next season will be looking to build on their superb performances.

Under 14s Director of Football – Tony Clarke-Holland and Dogsbody to the above – Andy Fairhurst

Men's



In a first season together as a team, there have been some hard fought-out matches in the Braintree and North Essex Sunday League. Cup performances were probably some of the best for the men this first season getting to the semi and quarters of two of the league's cup competitions. Certainly as well as football, the social scene for the players has become strong and we trust form the basis of a strong team to go forward into a second season next year.

Dan Mercer
Great Bardfield FC

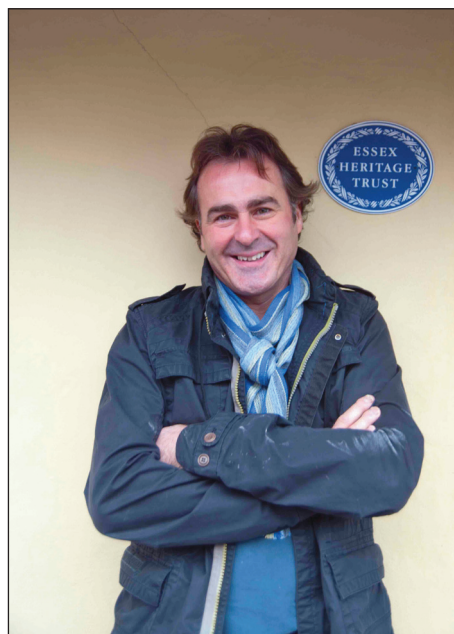


Great Bardfield Historical Society

This year we were saddened by the death of Tony Parkin, a staunch member of the society who was made a Life Member in recognition of his commitment to the society throughout his life.

The Historical Society aims to protect our heritage and to educate and inform people about its significance. This is done partly through putting on an interesting and varied programme of talks and visits every year. Last year these included an evening on dance in the time of Shakespeare by the Capriol Society for early dance, a well informed talk on the history of India since 1900 by Rakesh Pathak, a dramatically presented view of life behind harem walls by Louise Reed, and an engaging talk on Bardfield in the time of Chaucer by local writer David Yates. Visits included a very interesting afternoon at the Warner Archive, Braintree where we were able to see exquisitely designed fabrics dating from the sixteenth to the twentieth century, including some examples by Bardfield Artist, Marianne Straub. Other visits were to the East Anglian Railway Museum at Chappel and a tour of Audley End House. Our programme this year includes:

Wed 23 rd May:	Bells of Bardfield: Peter Wood (in the church)
Wed 20 th June:	Yesterday a King: Julian Whybra
Wed 17 th Oct:	London in the Blitz: Brian Williams
Wed 7 th Nov:	Life and Times of John Ray: Malcolm Bryan
Wed 5 th Dec:	An Eccentric Look at East Anglia: Charlie Haylock
Sat 2 nd March:	AGM and Social Evening



'Flog It!'s Paul Martin outside the Cottage Museum in the rain last November

This year all meetings are in the Friends Meeting House at 8pm and everyone is welcome. Look out for posters giving further details. Visits are planned to Silver End Model Village, built by Crittalls, on 9th June; Great Maplestead and Castle Hedingham Churches on July 14th and Ickworth House on 15th September. To book a visit telephone Carolynne Ruffle 810986.

The Cottage Museum and the Cage are open from Easter until the end of September and welcome visitors from all over the world. We appreciate the time given by the many volunteers who staff the Museum during the season. We are grateful to the Horticultural Society for their continued upkeep of the Museum garden. We have produced a number of publications on aspects of the history of the village which continue to sell well. We are planning to update and add to them.

The society monitors all planning applications for alterations to listed buildings in the village, raising issues whenever this is relevant.



Filming 'Flog It!' in the Cottage Museum. Paul Martin was shown how to plait straw by Veronica Main of Luton Museum. As you can see, it was a very tight squeeze.

At the March AGM films were shown from the Society's archive including the recent BBC2 'Flog It!' programme which was filmed around the village and in the museum. Thanks to Chris Morrell and Norman Newton who are working on cataloguing films made about Great Bardfield over the years and putting them onto DVD.

New members and volunteers to help in the Museum are always welcome – a short training course is given! If you are interested or would like more information contact Jenny Rooney (810572) or Janet Dyson (810838).

Janet Dyson, Chair.



Crown Green - the planting of a red oak to commemorate Queen Elizabeth II's Coronation. The photo was taken in 1953, the first tree having died. Sixty years on the tree is magnificent.



Great Bardfield Community Choir

The Community Choir has grown considerably since it began in June 2010 and now has over fifty members ranging in age from 12 to 80+. We sing for pleasure. You do not need to be able to read music and no previous singing experience is necessary. Most of our music is arranged for three or four parts, sopranos, altos, tenors and basses.

During the last year we gave a concert in the High Barn in the summer, an Autumn Concert at the Church Harvest Weekend and sang carols at the Town Hall Raffle Evening. We sing all kinds of music including pop, folk, jazz and classical. Our recent repertoire includes Queen's *Bohemian Rhapsody*, Leonard Cohen's *Hallelujah*, Handel's anthem, *Zadok the Priest*, John Rutter's *For the Beauty of the Earth* and Irving Berlin's *Puttin' on the Ritz*.

New singers are always welcome so if you enjoy singing come and give it a try. We meet on Tuesday evenings at 8pm, usually in the Town Hall. We each pay £2 per rehearsal which covers costs of hiring the hall and buying or hiring music. We have found that singing is good for you and makes people feel happy!

For further information phone 810838 or visit 'Choir' on the Parish Council website.

Janet Dyson, Musical Director

Great Bardfield Youth Club

Now in its fifth year following resurrection, the Youth Club continues to provide a place for youngsters to meet up and socialise after a busy week at school.

Interestingly, the club has changed over the past year or so. It used to be predominantly attended by kids from Helena Romanes School which is no longer the case. We now have members from all local schools and some further afield which is good because it means that children who grew up together at our excellent village primary school are able to keep in touch with friends who have moved to different schools.

Sadly, having enough supervisors is still a problem but it isn't just having enough that matters, it's having a reasonable level of enthusiasm and commitment. I don't think some of our supervisors would mind me saying that they help out at the Youth Club because their conscience tells them they should. This is hugely appreciated because without their efforts we couldn't open on Friday nights but it doesn't stretch the Youth Club experience beyond a Friday night social. What we need are a few supervisors who are enthusiastic and interested in introducing new activities to the members, sometimes beyond Friday nights. We have a few such supervisors but it is unfair to rely on the same few all the time.

Laura Pearson, local teenager and Bardfield Times columnist has been helping at the Club to fulfil the volunteer work section of her bronze Duke of Edinburgh Award. This works very well as it's great for the members to have someone helping who isn't quite as old as their





Boxing training at the Youth Club – one of the highlights of the year

Granddad. If any other youngsters would like to help out on Friday evenings, as part of their D of E or working towards another professional objective or just for fun, please, do get in touch. You would be very welcome.

The Essex Boys and Girls Club continues to be a source of new experiences and we shall certainly be involved in some of their activities throughout the year. In December they brought boxing training to GBYC. The buzz and excitement it brought to the club was infectious and the members absolutely loved it. One boy has even joined Rayne Boxing Club as a result. Dawn and I are taking eight members to the heats of the EBGC angling championship on 26 May in Ingatstone which should be 'interesting'.

Further good news is that the problems we had with residents complaining of bad behaviour on Friday nights seem to have stopped completely. I don't think I've had a single phone call for over a year. Generally the group of kids going through the Youth Club at the moment is the best behaved that I've known in the last four years which in a way saddens me that we aren't able to provide more interest for them. It would be so rewarding if a few parents of children that use the club would help out occasionally but with the exception of a couple of our supervisors, this just doesn't happen.

So in summary, we've had a 'ticking over' year but there is a spirit amongst a few of us that wants to liven up the Youth Club again. Parents of current Year 6 kids please send them along and lastly ... don't forget we collect Tesco vouchers!

Steve Slemmings
Chair, GBYC



Tuesday Club

The Tuesday Club of Great Bardfield is a ladies' club which meets monthly, mainly in the Town Hall. We have a variety of speakers and occasional outings to the theatre and places of interest. Our annual subscription is £14, which includes light refreshments.

Our meetings over the past year have been as follows:

Apr	2011	Music Boxes by Doreen Whitelock
May	2011	Twelve Challenges after Fifty by Glenys Chatterley
Jun	2011	How I became a Real Old So-and-so by Brenda Harley
Jul	2011	Summer outing to Marks Hall Gardens and Arboretum
Aug	2011	No meeting
Sept	2011	The Queen's Dressmaker by Ann Hardy, and a Theatre trip to see "Annie get your Gun"
Oct	2011	A Day in the Life of a Turkish Village by Jenny Gibbs
Nov	2011	Underwater Wreck Diving by Daniel Johnson
Dec	2011	Christmas lunch
Jan	2012	My Beloved Bardfield (The Mediaeval Lady of the Manor) by Sally Ratcliffe
Feb	2012	Looking after Yourself when 60+ by Jenny Wright
Mar	2012	"Love Letters" – her book described by author Jojo Moyes
Apr	2012	Strolling through some Gardens of the World by Doreen Whitelock

The Club chooses a charity to support each year. Our charity for 2010 and 2011 was Help for Heroes and in 2012 we are supporting The Teenage Cancer Trust.

Marian McDonald



Great Bardfield Parish Council

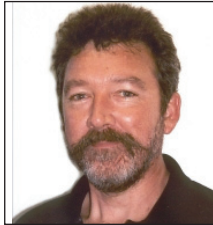
Members contact details



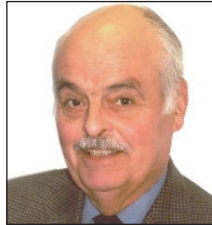
Cllr Janet Dyson
Chairman
01371 810838



Cllr Carolynne Ruffle
Vice Chairman
01371 810986



Cllr Simon Walsh
01371 810451



Cllr Tony Hayward
01371 810320



Cllr Darren Hockley
01371 810898



Cllr Steve Slemmings
01371 810098



Cllr Alicia Holmes
01371 810563



Mrs Kate Fox
Parish Clerk
01371 810111
clerk@greatbardfield-pc.gov.uk
www.greatbardfield-pc.gov.uk

Community Information Point
01371 810327
gbpc@btconnect.com

Open Wednesday and Saturday 10.00am to 12 noon

Design and layout: Jenny Rooney

Photographs: Dan Mercer, Darren Hockley, Ian Fox, Doug Joyce, Paul Boon, Norman Newton, Jenny Rooney, Janet Dyson. Steve Slemmings, Anne Barney and Les Buckland collection.



BT Editor, David Yates marks his 70th birthday by bungee jumping for charity at The Vine. Brave man



Madame Boules with 2011 winners Rory Hitchcock and Cam Meldrum. Will they ever get beaten?



Bardfield Brass playing at St Mary's for Harvest Festival



Public meeting in Town Hall for Bardfield's Parish Plan refresh



Steve Slemmings making candy floss at last year's village Garage Sale. Always a popular day



Ian Ruffle and Steve Hudspith in Bardfield Players' production last May, "It Could be Any One of Us"